

SIDE ROTARY

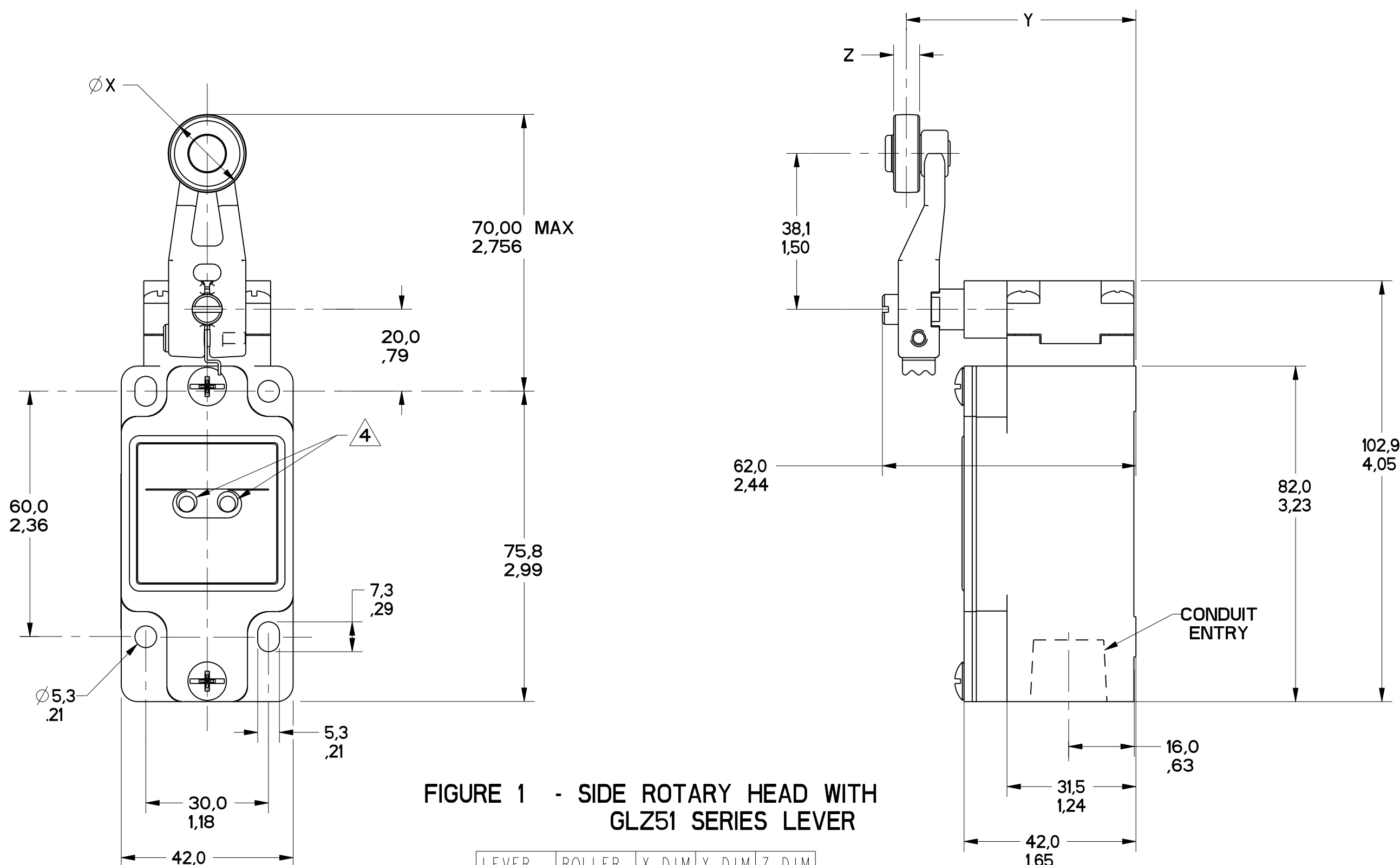


FIGURE 1 - SIDE ROTARY HEAD WITH GLZ51 SERIES LEVER

LEVER	ROLLER MATL	X DIM	Y DIM	Z DIM
GLZ51A	NYLON	19.1 .75	55.9 2.20	6.4 .25
GLZ51B	STEEL	19.1 .75	55.9 2.20	6.4 .25
GLZ51Y	RUBBER	50.0 1.97	66.1 2.60	10.0 .39
GLZ51T	STAINLESS STEEL	19.1 .75	56.8 2.24	8.8 .345

GLZ54J: 200.00 / 7.870 MAX  
GLZ54K: 140.00 / 5.510 MAX  
ALUMINUM ROD

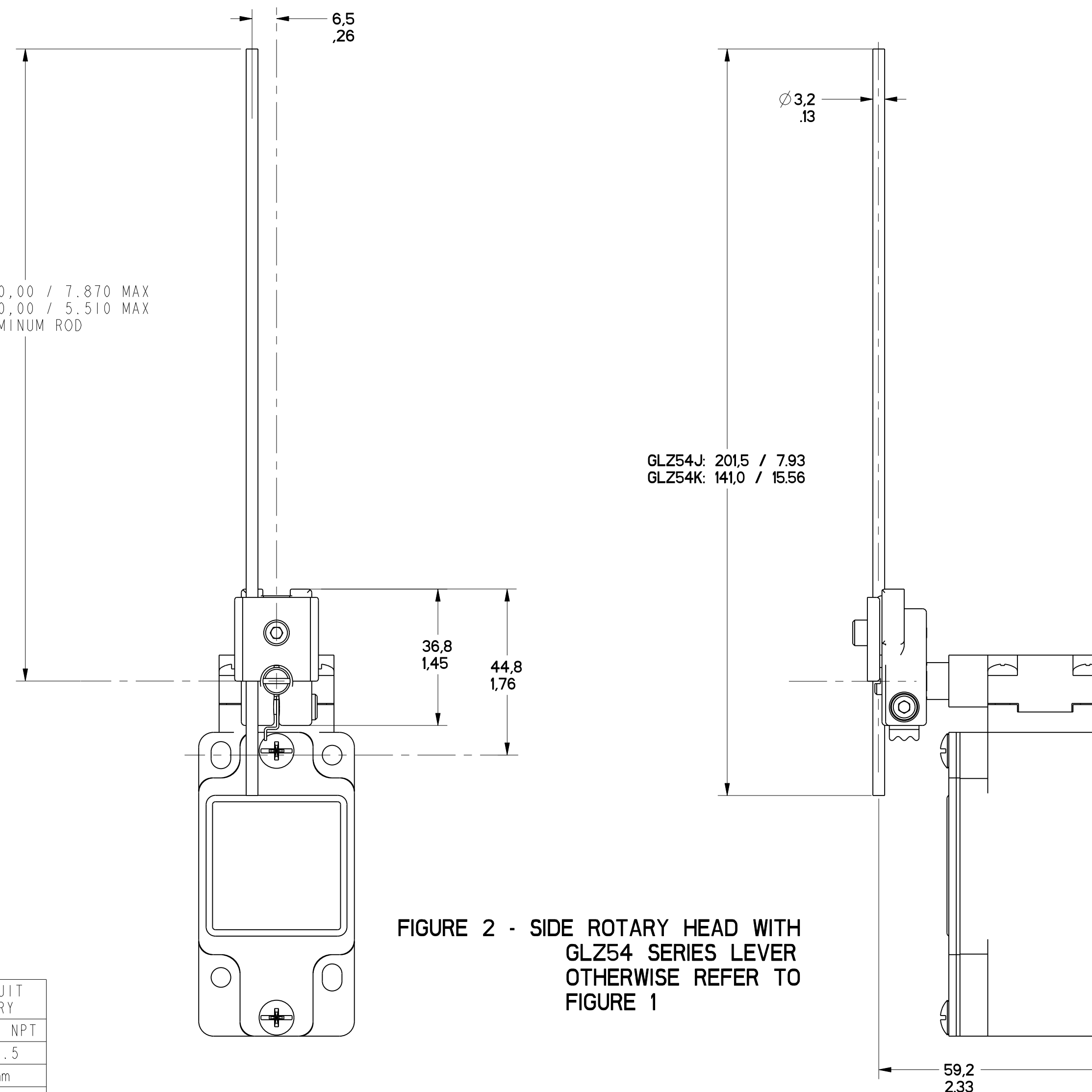


FIGURE 2 - SIDE ROTARY HEAD WITH GLZ54 SERIES LEVER OTHERWISE REFER TO FIGURE 1

FIGURE	CATALOG LISTING	CONDUIT ENTRY
1A	GL*A SERIES	1/2-14 NPT
1B	GL*B SERIES	PG13.5
1C	GL*C SERIES	20mm
1D	GL*D SERIES	PF1/2

ELECTRICAL RATING			
AC		DC	
A600 Ue	AC15 Ie	O300 Ue	DC13 Ie
(VOLTS)	(AMPS)	(VOLTS)	(AMPS)
120	6	24	2.8
240	3	125	.55
380	1.9	250	.27
480	1.5		
500	1.4		
600	1.2		

ENVIRONMENTAL RATING	
IP67	
NEMA/UL TYPES 1, 4, 12, 13	

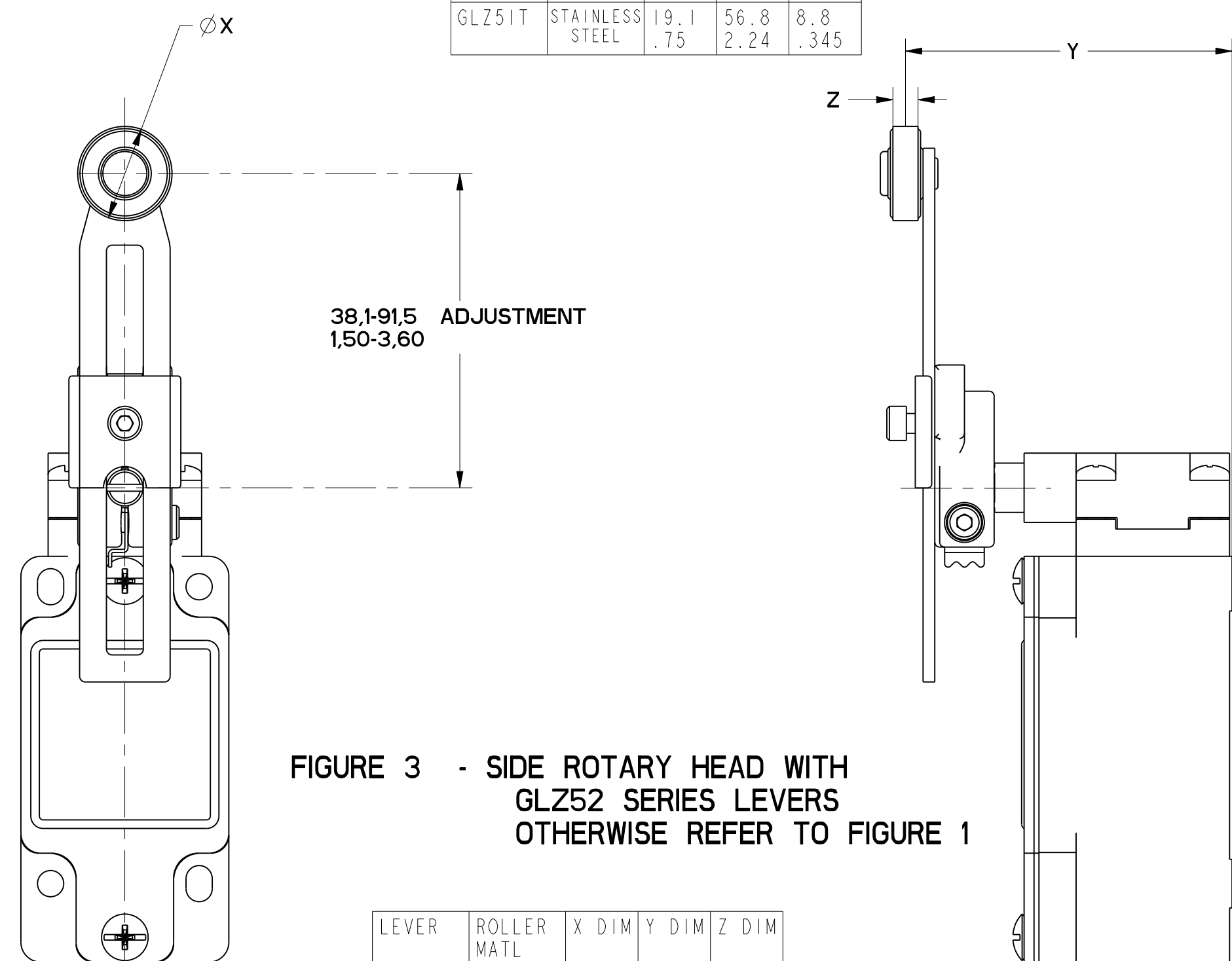
- NOTES
- HEADS MAY BE INDEXED IN 90° INCREMENTS
  - LEVERS MAY BE KEYED TO THE SHAFT AT 90° INCREMENTS. THEY MAY ALSO BE ATTACHED, BUT NOT KEYED ANYWHERE ON THE SHAFT.
  - FOR ADDITIONAL LEVERS SEE "M" DRAWING CHART GLZ5
  - THE LEFT INDICATOR IS GREEN AND INDICATES "POWER ON" IT IS ON GLH SERIES PRODUCTS ONLY. THE RIGHT INDICATOR IS YELLOW AND INDICATES "OUTPUT STATUS" IT IS ON GLF AND GLH SERIES PRODUCTS ONLY.
  - THE MAXIMUM VOLTAGE,  $V_e$  OF GLF AND GLH SERIES PRODUCTS IS THE MAXIMUM RATED VOLTAGE OF INDICATION LIGHTS
  - FREE POSITION, OPERATE POINT, OVERTRAVEL AND PRETRAVEL ALL TO EN50041
  - CAM TRAVEL FOR FIG 9 ONLY APPLIES WHEN LEVER IS ADJUSTED TO 38.1 / 1.50
  - THE MAXIMUM VOLTAGE,  $V_e$  OF "06" AND "36" BASIC SWITCH CODE IS 500V (A500) TEMPERATURE RANGE
- (ALL PRODUCTS EXCEPT W/SIDE ROTARY OPERATING HEAD)  
OPERATING: -25°C TO +85°C / -13°F TO +185°F  
STORAGE: -40°C TO +85°C / -40°F TO +185°F  
(PRODUCTS W/SIDE ROTARY OPERATING HEAD)  
OPERATING: -40°C TO +85°C / -40°F TO +185°F  
STORAGE: -40°C TO +85°C / -40°F TO +185°F

CATALOG LISTING	BODY DIMENSIONS, FIGURE	HEAD DIMENSIONS, FIGURE	HEAD ACTUATION, FIGURE
GLA***	I	N/A	N/A
GLF***	I	N/A	N/A
GLH***	I	N/A	N/A
GLA***	1A	N/A	N/A
GLB***	1B	N/A	N/A
GLC***	1C	N/A	N/A
GLD***	1D	N/A	N/A
GL***A1*	I	1	8
GL***A2*	I	3	9
GL***A4*	I	2	10
GL***A5*	I		8
GL***B	I	4	11
GL***C	I	5	13A, 13B
GL***D	I	6	14A, 14B
GL***E7A	I	7A	12
GL***E7B	I	7	12
GL***E7C	I	7E	15
GL***E7D	I	7B	12
GL***K8A	I	7C	15
GL***K8B	I	7D	15
GL***K8C	I	7	15

FIGURE 3 - SIDE ROTARY HEAD WITH GLZ52 SERIES LEVERS OTHERWISE REFER TO FIGURE 1

LEVER	ROLLER MATL	X DIM	Y DIM	Z DIM
GLZ52A	NYLON	19.1 .75	65.9 2.59	6.4 .25
GLZ52B	STEEL	19.1 .75	65.9 2.59	6.4 .25
GLZ52D	NYLON	38.1 1.5	65.9 2.59	6.4 .25
GLZ52E	NYLON	19.1 .75	79.37 3.125	33.07 1.300
GLZ52W	RUBBER	40.0 1.6	71.5 2.81	12.7 .5
GLZ52Y	RUBBER	50.0 1.97	68.8 2.71	10.0 .39

38.1-91.5 ADJUSTMENT  
1.50-3.60



MGL SERIES CHART 1  
 DRAWING NUMBER: 13  
 PAGE 1 OF 13  
 RELEASE NO. PR-201782  
 CHECK: MDM  
 DATE: 13  
 PTC/CAD  
 S.A.V. 2/MAR/06  
 DWM  
 07AUG06  
 08FEB08  
 04A3629  
 125208

THIS DRAWING COVERS A PROPRIETARY ITEM AND IS THE PROPERTY OF MICRO SWITCH, A DIVISION OF HONEYWELL. THIS DRAWING IS NOT TO BE COPIED OR USED WITHOUT THE APPROVAL OF MICRO SWITCH.

FED. MFG. CODE 91929

**MICRO SWITCH**  
a Honeywell Division

**SWITCH, ENCLOSED**

CATALOG LISTING  
**GL SERIES CHART 1**

THIRD ANGLE PROJECTION

SCALE: 1:1

DO NOT SCALE PRINT

TOLERANCES

APPLY TO DESIGN UNITS. CONVERSIONS ARE ONLY FOR REFERENCE. UNLESS NOTED, TOLERANCES ARE:

	DIM	TOL.	DIM	TOL.
NO PLACES	X, Y, Z	±.04	X, Y, Z	±.0015
TWO PLACES	X, Y, Z	0.0015	X, Y, Z	0.0015
THREE PLACES	X, Y, Z	0.0005	X, Y, Z	0.0005

DESIGN UNITS: SI METRIC (checked) US CUSTOMARY

WEIGHT

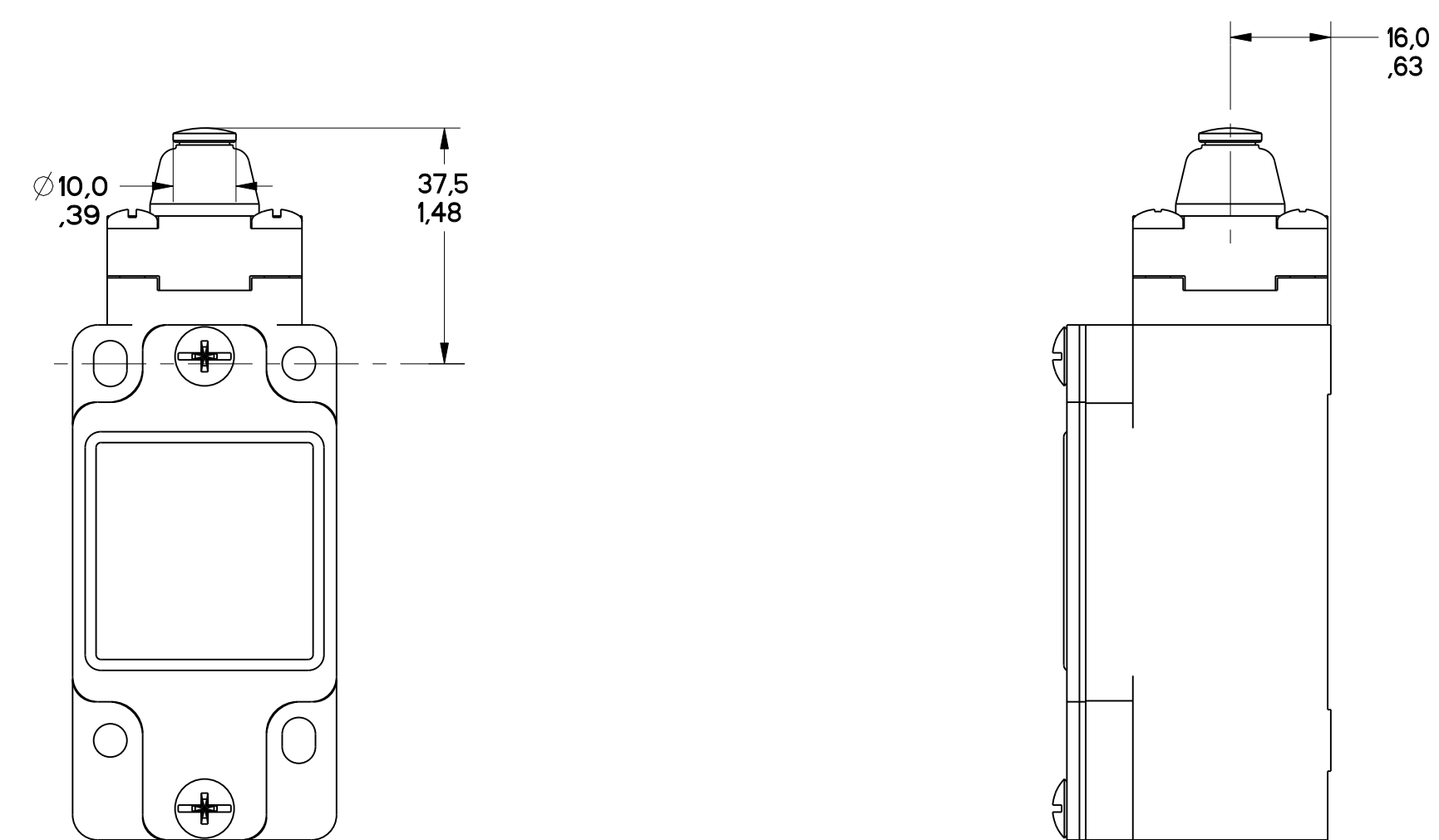


FIGURE 4 - TOP PIN PLUNGER HEAD  
OTHERWISE REFER TO  
FIGURE 1

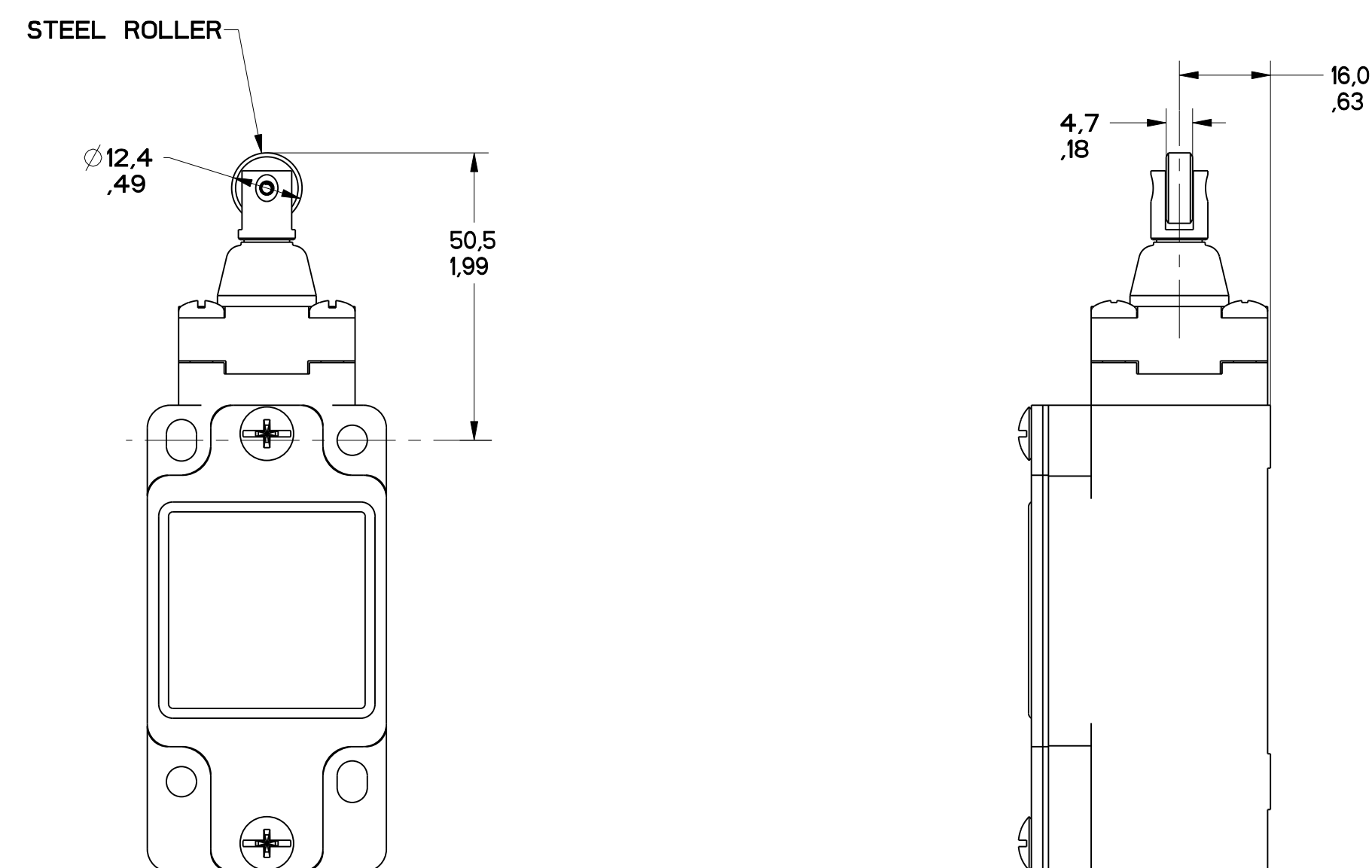


FIGURE 5 - TOP ROLLER PLUNGER HEAD  
OTHERWISE REFER TO  
FIGURE 1

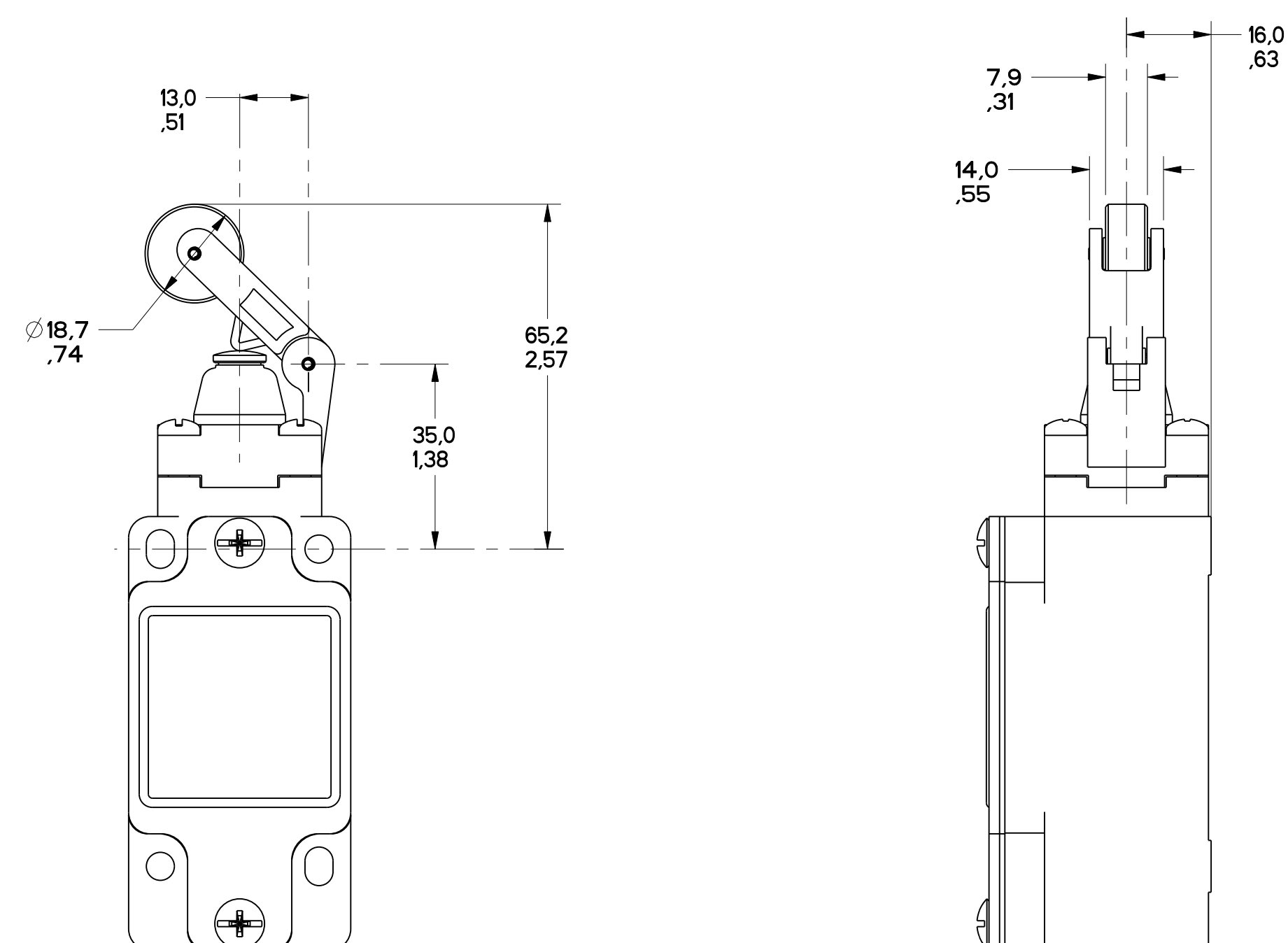


FIGURE 6 - TOP LEVER HEAD,  
OTHERWISE REFER TO  
FIGURE 1

MGL SERIES CHART 1  
 DRAWING NUMBER: 2 OF 13  
 RELEASE NO. PR-20782  
 ISSUE: 13  
 CHECK: MDV  
 P.T.C./CAD  
 W.L.S. 26AUG83  
 CHECK: G.H.  
 1983F08

REV	DATE	BY	CHKD	DESCRIPTION
A	01/18/83	W.L.S.	W.L.S.	REVISED
B	02/03/83	W.L.S.	W.L.S.	REVISED
C	02/27/83	W.L.S.	W.L.S.	REVISED
D	03/04/83	W.L.S.	W.L.S.	REVISED
E	03/10/83	W.L.S.	W.L.S.	REVISED
F	03/17/83	W.L.S.	W.L.S.	REVISED
G	03/24/83	W.L.S.	W.L.S.	REVISED
H	04/26/83	W.L.S.	W.L.S.	REVISED
I	05/01/83	W.L.S.	W.L.S.	REVISED
J	05/08/83	W.L.S.	W.L.S.	REVISED

THIS DRAWING COVERS A PROPRIETARY ITEM AND IS THE PROPERTY OF MICRO SWITCH, A DIVISION OF HONEYWELL. THIS DRAWING IS NOT TO BE COPIED OR USED WITHOUT THE APPROVAL OF MICRO SWITCH.		FEDERAL MFG. CODE 91929		CATALOG LISTING	
<b>MICRO SWITCH</b> a Honeywell Division		<b>SWITCH, ENCLOSED</b>		<b>GL SERIES CHART 1</b>	
DESIGN UNITS: <input checked="" type="checkbox"/> SI METRIC <input type="checkbox"/> US CUSTOMARY		TOLERANCES: DO NOT SCALE PRINT		THIRD ANGLE PROJECTION	
WEIGHT:		TOLERANCES:		SCALE: 1:1	
NO PLACES: X .04 ONE PLACE: X .1 TWO PLACES: X .14 THREE PLACES: X .18		TOL. .04 .1 .14 .18		NO. OF DEC. PLACES: X .04 X .1 X .14 X .18	

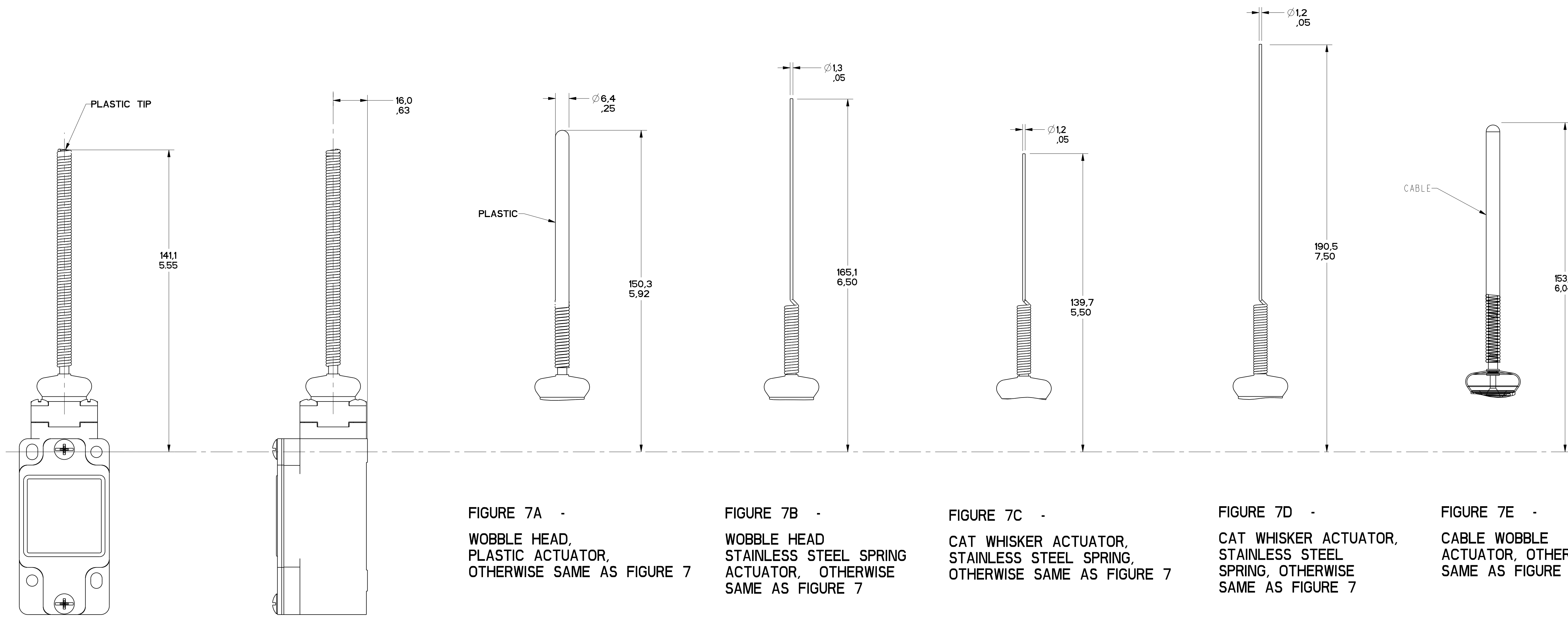


FIGURE 7A -  
WOBBLE HEAD,  
PLASTIC ACTUATOR,  
OTHERWISE SAME AS FIGURE 7

FIGURE 7B -  
WOBBLE HEAD  
STAINLESS STEEL SPRING  
ACTUATOR, OTHERWISE  
SAME AS FIGURE 7

FIGURE 7C -  
CAT WHISKER ACTUATOR,  
STAINLESS STEEL SPRING,  
OTHERWISE SAME AS FIGURE 7

FIGURE 7D -  
CAT WHISKER ACTUATOR,  
STAINLESS STEEL  
SPRING, OTHERWISE  
SAME AS FIGURE 7

FIGURE 7E -  
CABLE WOBBLE  
ACTUATOR, OTHERWISE  
SAME AS FIGURE 7

FIGURE 7 - WOBBLE HEAD, AND CAT WISKER HEAD  
COIL ACTUATOR,  
OTHERWISE REFER TO  
FIGURE 1

GL SERIES CHART 1  
DRAWING NUMBER 3 OF 13  
RELEASE NO. PR-21597  
REV. 13  
REV. 1  
REV. 2  
REV. 3  
REV. 4  
REV. 5  
REV. 6  
REV. 7  
REV. 8  
REV. 9  
REV. 10  
REV. 11  
REV. 12  
REV. 13  
REV. 14  
REV. 15  
REV. 16  
REV. 17  
REV. 18  
REV. 19  
REV. 20  
REV. 21  
REV. 22  
REV. 23  
REV. 24  
REV. 25  
REV. 26  
REV. 27  
REV. 28  
REV. 29  
REV. 30  
REV. 31  
REV. 32  
REV. 33  
REV. 34  
REV. 35  
REV. 36  
REV. 37  
REV. 38  
REV. 39  
REV. 40  
REV. 41  
REV. 42  
REV. 43  
REV. 44  
REV. 45  
REV. 46  
REV. 47  
REV. 48  
REV. 49  
REV. 50  
REV. 51  
REV. 52  
REV. 53  
REV. 54  
REV. 55  
REV. 56  
REV. 57  
REV. 58  
REV. 59  
REV. 60  
REV. 61  
REV. 62  
REV. 63  
REV. 64  
REV. 65  
REV. 66  
REV. 67  
REV. 68  
REV. 69  
REV. 70  
REV. 71  
REV. 72  
REV. 73  
REV. 74  
REV. 75  
REV. 76  
REV. 77  
REV. 78  
REV. 79  
REV. 80  
REV. 81  
REV. 82  
REV. 83  
REV. 84  
REV. 85  
REV. 86  
REV. 87  
REV. 88  
REV. 89  
REV. 90  
REV. 91  
REV. 92  
REV. 93  
REV. 94  
REV. 95  
REV. 96  
REV. 97  
REV. 98  
REV. 99  
REV. 100

THIS DRAWING COVERS A PROPRIETARY ITEM AND IS THE PROPERTY OF MICRO SWITCH, A DIVISION OF HONEYWELL. THIS DRAWING IS NOT TO BE COPIED OR USED WITHOUT THE APPROVAL OF MICRO SWITCH.		CATALOG LISTING	
MICRO SWITCH a Honeywell Division		SWITCH, ENCLOSED	
GL SERIES CHART 1		DESIGN UNITS	
SI METRIC <input checked="" type="checkbox"/>		US CUSTOMARY <input type="checkbox"/>	
WEIGHT		WEIGHT	

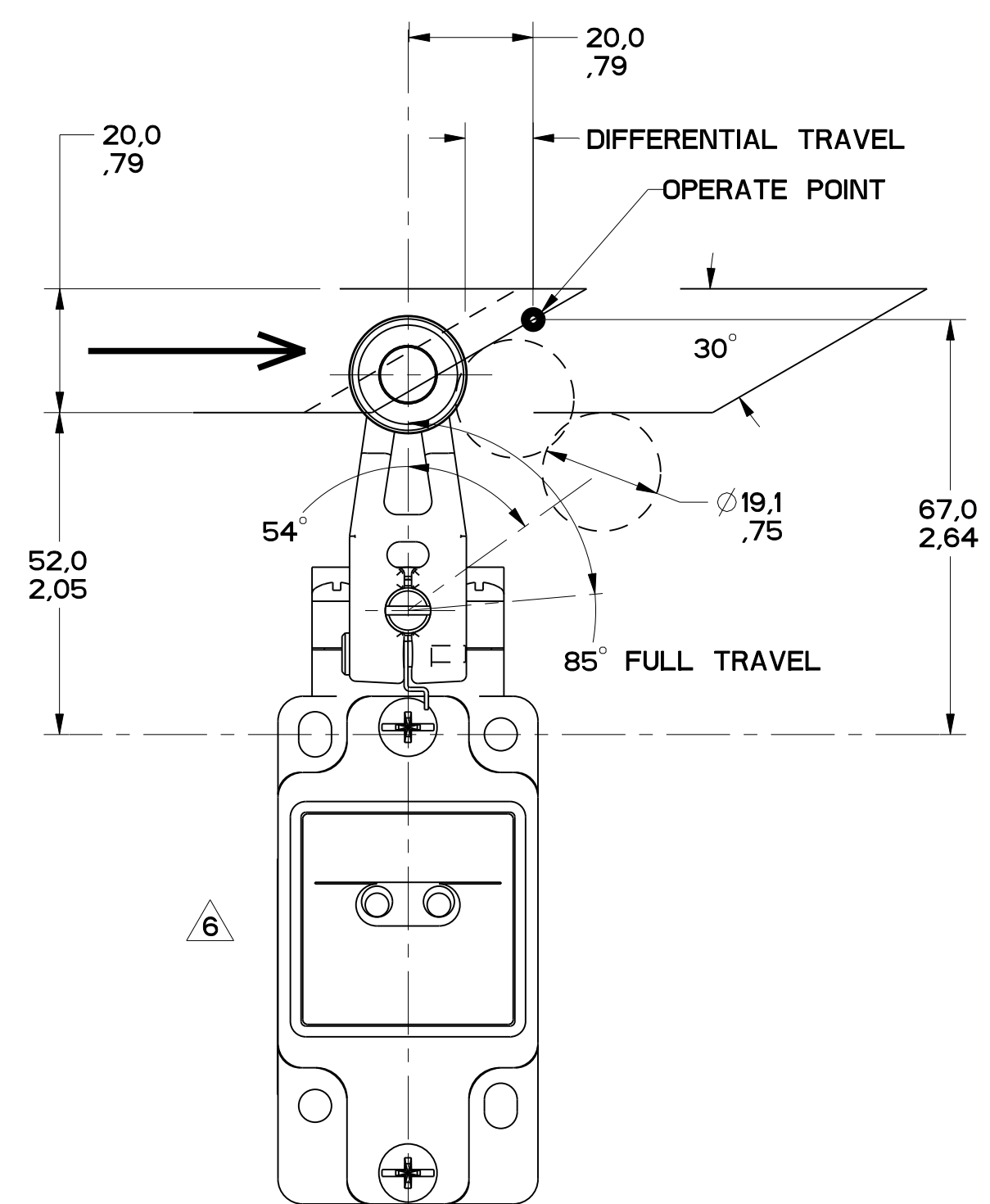


FIGURE 8

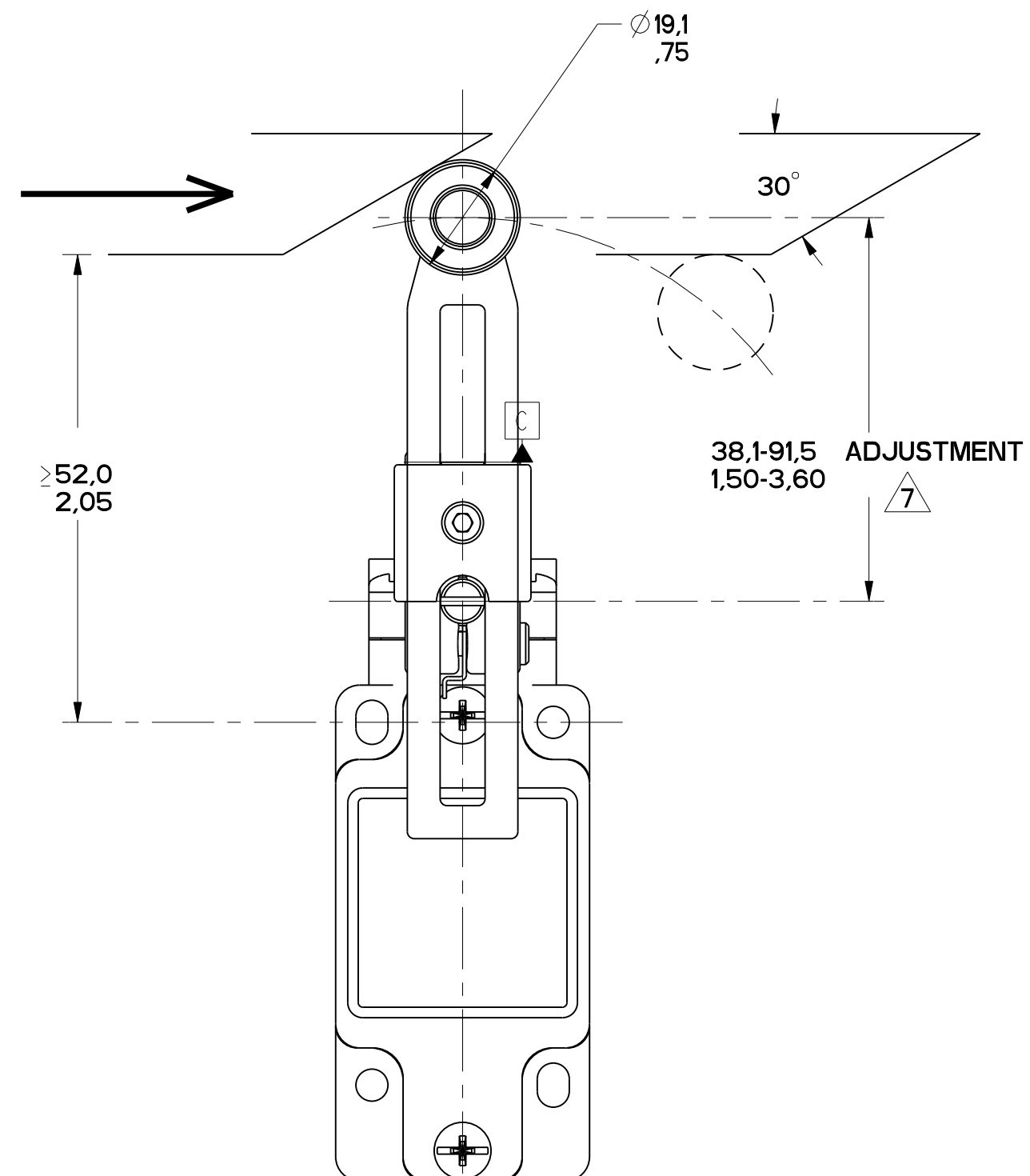


FIGURE 9

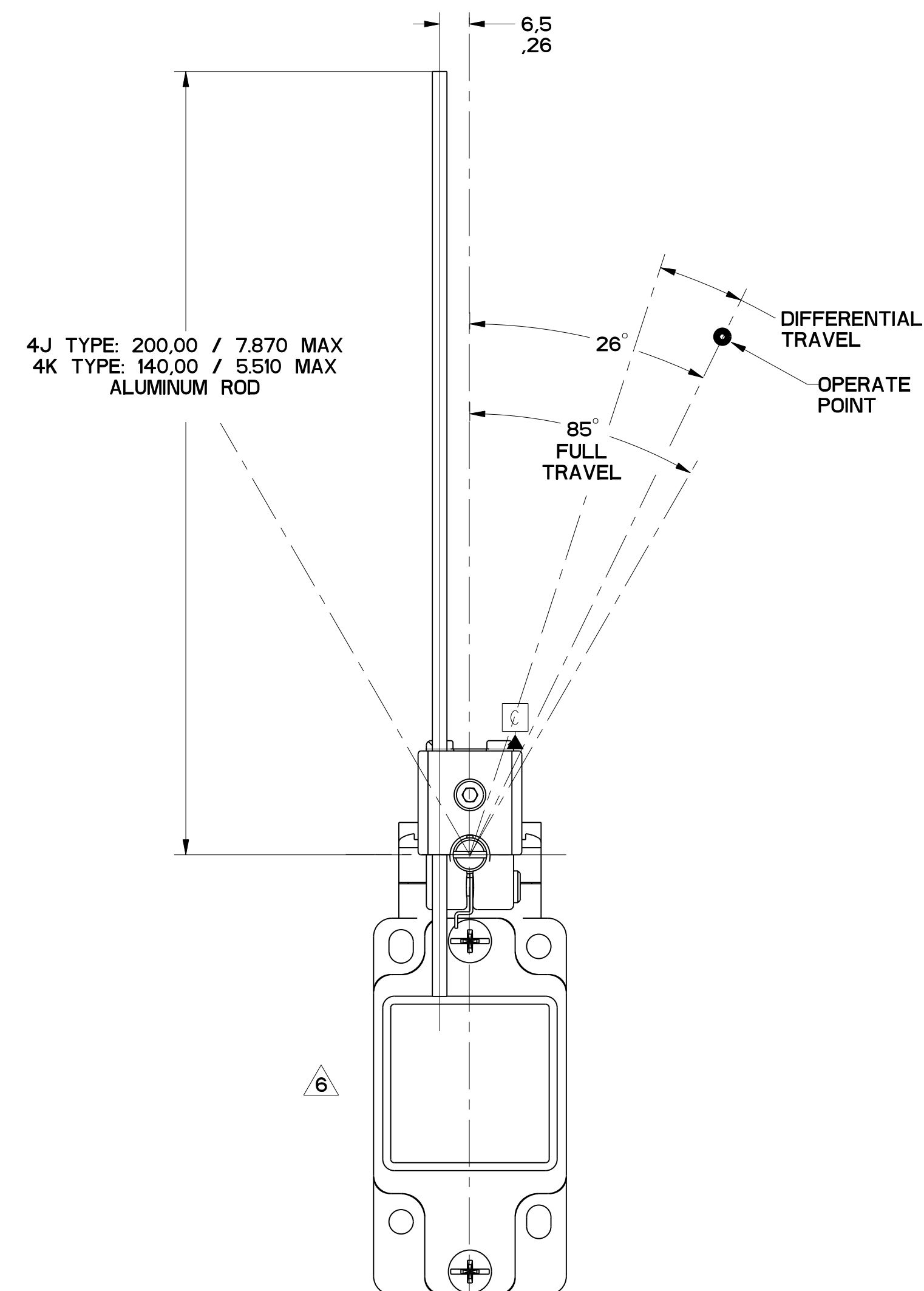


FIGURE 10

MGL SERIES CHART 1  
 DRAWING NUMBER: 4 OF 13  
 RELEASE NO. PR-20782  
 PAGES: 13  
 ISSUE: MDM  
 CHECK: MDM  
 APPROVALS:  
 A: 28-21603  
 B: 27-MAR-96  
 C: CO-93181  
 D: 202741  
 E: 349501  
 F: 0000401  
 G: 0002986  
 H: 0037216  
 I: 0043629  
 J: 1251288  
 S. A. V. 27 MAR 96  
 P.T.C./CAD  
 DRAWN

THIS DRAWING COVERS A PROPRIETARY ITEM AND IS THE PROPERTY OF MICRO SWITCH, A DIVISION OF HONEYWELL. THIS DRAWING IS NOT TO BE COPIED OR USED WITHOUT THE APPROVAL OF MICRO SWITCH.  
 FED. MFG. CODE 91929  
 MICRO SWITCH a Honeywell Division  
 SWITCH, ENCLOSED  
 CATALOG LISTING  
 GL SERIES CHART 1  
 DESIGN UNITS: SI METRIC (checked) US CUSTOMARY  
 WEIGHT

THIRD ANGLE PROJECTION			
DO NOT SCALE PRINT			
TOLERANCES			
APPLY TO DESIGN UNITS. CONCESSIONS ARE ONLY FOR REFERENCE, UNLESS NOTED. TOLERANCES ARE:			
NO PLACES	X	17.04	X .1
ONE PLACE	X .1	0.41146	X .005
TWO PLACES	X .01	0.127008	X .0005
THREE PLACES	X .001		X .0001
ANGLES		±2'	

FIGURES 8, 9, 10 SIDE ROTARY HEAD, ANGULAR ACTUATION

CATALOG LISTING	CONTACT BLOCK DIAGRAM	NOMINAL TRAVELS AND RELATED TERMINALS ■ - CONTACT CLOSED, □ - CONTACT OPEN, ▨ - CONTACT CLOSED DIFFERENTIAL TRAVEL, ** POSITIVE OPENING TO IEC 947-5-1	MAXIMUM OPERATING TORQUE N-m LB-IN	MAXIMUM DISCONNECT TORQUE N-m LB-IN	MAX OPERATE DEGREE/S	MIN OPERATE DEGREE/S	MAX OPERATE FREQUENCY OPS/MIN
GL**01A GL**07A	SNAP - ACTION CONTACTS SINGLE POLE 	 21-22 26° 55**° 85° 13-14 12° DIFFERENTIAL TRAVEL	.330 2.9	.385 3.4	1290	13	250
GL**03A GL**33A	SLOW ACTING BREAK BEFORE MAKE 	 21-22 26**° 85° 13-14 38°	.330 2.9	.385 3.4	1290	13	250
GL**04A GL**34A	SLOW ACTING MAKE BEFORE BREAK 	 21-22 38**° 85° 13-14 26°	.330 2.9	.400 3.5	1290	13	250
GL**05A GL**35A	SLOW ACTING 	 13-14 38° 85° 23-24	.330 2.9	.385 3.4	1290	13	250
GL**06A GL**36A	SLOW ACTING 	 11-12 26**° 85° 21-22	.330 2.9	.385 3.4	1290	13	250
GL**20A GL**22A GL**24A GL**32A	SNAP ACTION CONTACTS DOUBLE POLE 	 11-12, 21-22 26° 55**° 85° 13-14, 23-24 12° DIFFERENTIAL TRAVEL	.330 2.9	.385 3.4	1290	13	250
GL**21A GL**25A GL**28A GL**31A	SNAP ACTION CONTACTS DOUBLE POLE SEQUENTIAL 	 11-12 27 42 13-14 8 DIFFERENTIAL TRAVEL 21-22 8 DIFFERENTIAL TRAVEL 23-24	.330 2.9	N/A	1290	13	250

SIDE ROTARY HEAD, CAM ACTUATION PER EN50041, FIGURES 8 AND 9

CATALOG LISTING	CONTACT BLOCK DIAGRAM	NOMINAL TRAVELS AND RELATED TERMINALS ■ - CONTACT CLOSED, □ - CONTACT OPEN, ▨ - CONTACT CLOSED DIFFERENTIAL TRAVEL, ** POSITIVE OPENING TO IEC 947-5-1 DIMENSIONS IN mm	MAXIMUM OPERATING FORCE N LB	MAXIMUM DISCONNECT FORCE N LB	MAX OPERATE VEL M/S IN/S	MIN OPERATE VEL mm/S IN/S	MAX OPERATE FREQUENCY OPS/MIN
GL**01A GL**07A	SNAP - ACTION CONTACTS SINGLE POLE 	 21-22 0 20 56** 13-14 12 DIFFERENTIAL TRAVEL	9.7 2.2	11.4 2.6	.85 33.5	8.5 .33	250
GL**03A GL**33A	SLOW ACTING BREAK BEFORE MAKE 	 21-22 0 20** 13-14 32	9.7 2.2	11.4 2.6	.85 33.5	8.5 .33	250
GL**04A GL**34A	SLOW ACTING MAKE BEFORE BREAK 	 21-22 0 32 13-14 20	9.7 2.2	11.4 2.6	.85 33.5	8.5 .33	250
GL**05A GL**35A	SLOW ACTING 	 13-14 0 32° 85° 23-24	9.7 2.2	11.4 2.6	.85 33.5	8.5 .33	250
GL**06A GL**36A	SLOW ACTING 	 11-12 0 20** 21-22	9.7 2.2	11.4 2.6	.85 33.5	8.5 .33	250
GL**20A GL**22A GL**24A GL**32A	SNAP ACTION CONTACTS DOUBLE POLE 	 11-12, 21-22 0 20 56** 13-14, 23-24 12 DIFFERENTIAL TRAVEL	9.7 2.2	11.8 2.7	.85 33.5	8.5 .33	250
GL**21A GL**25A GL**28A GL**31A	SNAP ACTION CONTACTS DOUBLE POLE SEQUENTIAL 	 11-12 0 20 38.5 13-14 8.5 DIFFERENTIAL TRAVEL 21-22 7 DIFFERENTIAL TRAVEL 23-24	9.7 2.2	N/A	.85 33.5	8.5 .33	250
GL**26J GL**27J GL**29J GL**30J	SNAP ACTION CONTACTS DOUBLE POLE CENTER NEUTRAL 	 11-12 0 16 13-14 8 DIFFERENTIAL TRAVEL 21-22 8 DIFFERENTIAL TRAVEL 23-24	9.7 2.2	N/A	.85 33.5	8.5 .33	250

MGL SERIES CHART 1  
 DRAWING NUMBER: 5 OF 13  
 RELEASE NO. PR-20782  
 DATE: 12 SEP 08  
 CHECK: BLR  
 DATE: 26 AUG 93  
 CHECK: G.H.  
 DATE: 12 SEP 08  
 PTC/CAD  
 DRAWN: W.L.S.  
 DATE: 26 AUG 93  
 CHECK: G.H.  
 DATE: 12 SEP 08

THIRD ANGLE PROJECTION

SCALE: -

DO NOT SCALE PRINT

TOLERANCES

APPLY TO DESIGN UNITS. CONVERSIONS ARE ONLY FOR REFERENCE. UNLESS NOTED, TOLERANCES ARE:

	MM	TOL.	IN	TOL.
NO PLACES	X	12.04	X	0.4725
ONE PLACE	X.1	0.40714	X.1	0.15995
TWO PLACES	X.11	0.15748	X.11	0.13125
THREE PLACES				
ANGLES				

DESIGN UNITS:  SI METRIC  US CUSTOMARY

WEIGHT

THIS DRAWING COVERS A PROPRIETARY ITEM AND IS THE PROPERTY OF MICRO SWITCH, A DIVISION OF HONEYWELL. THIS DRAWING IS NOT TO BE COPIED OR USED WITHOUT THE APPROVAL OF MICRO SWITCH.

FED. MFG. CODE 91929

CATALOG LISTING

**MICRO SWITCH**  
a Honeywell Division

**SWITCH, ENCLOSED**

**GL SERIES CHART 1**

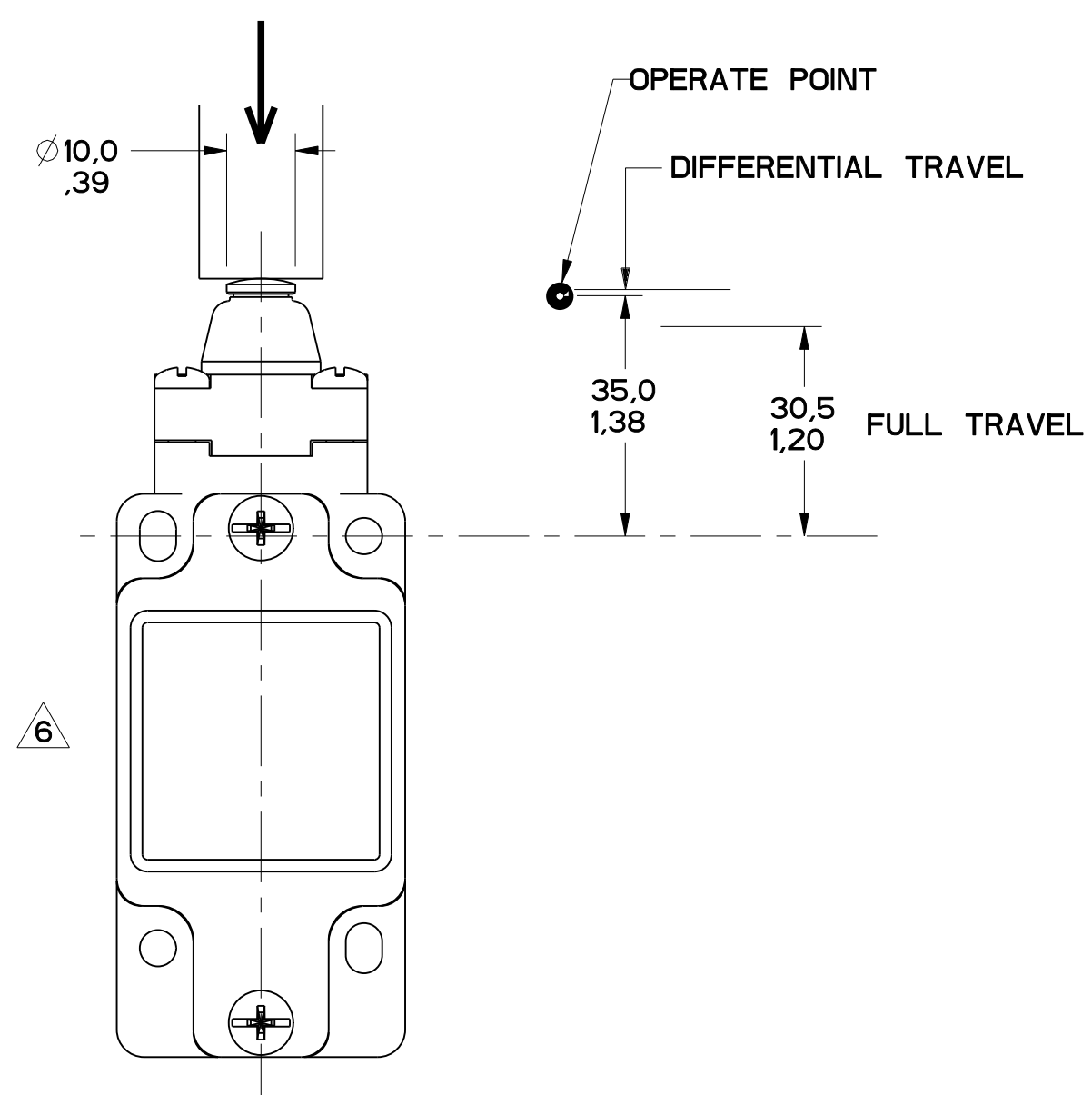


FIGURE 11

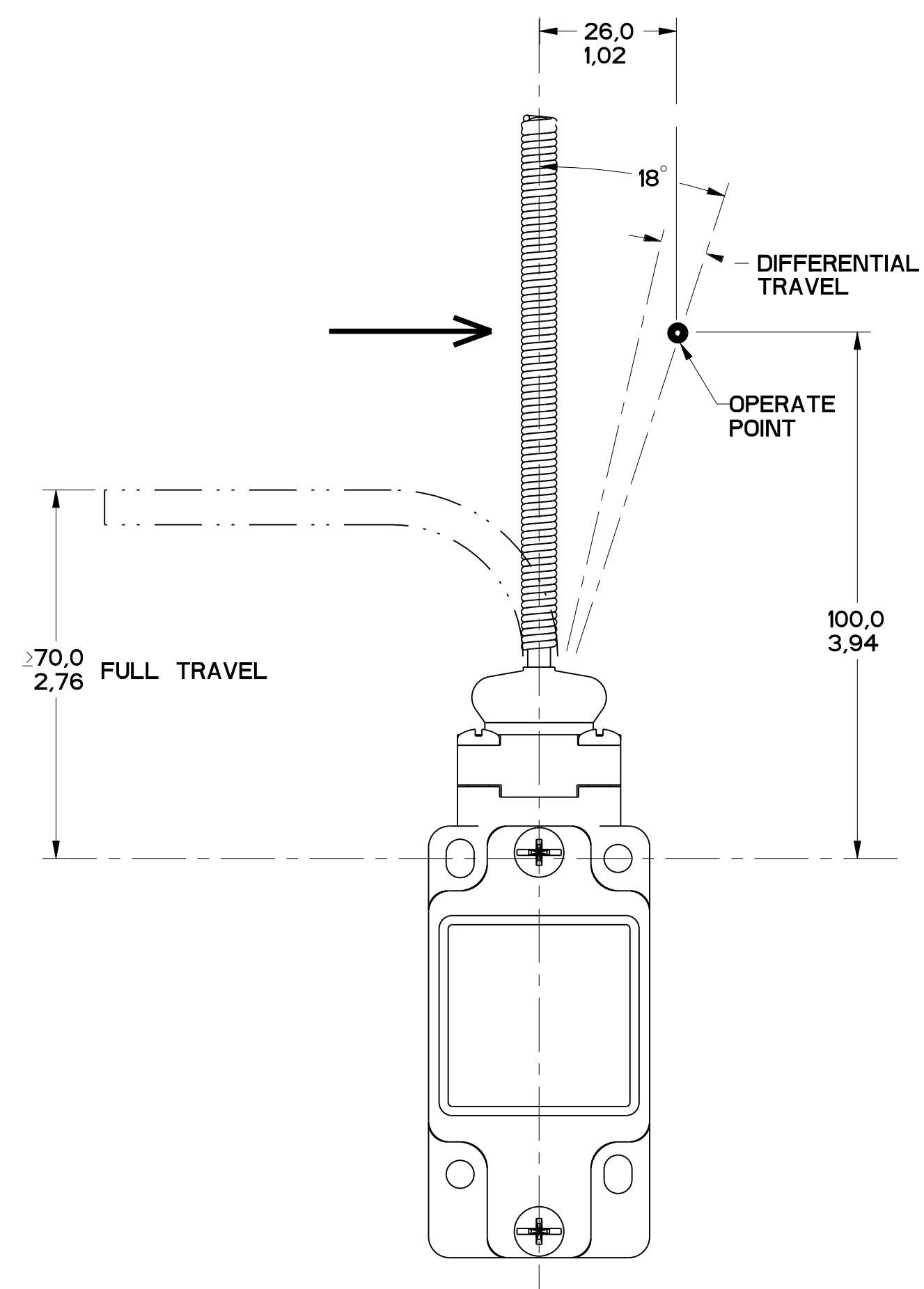


FIGURE 12

MGL SERIES CHART 1  
 DRAWING NUMBER: 6 OF 13  
 RELEASE NO. PR-20782  
 ISSUE: 13  
 CHECK: MDW  
 DATE: 200541  
 BY: 8JUN00  
 C: 202741  
 BY: 3AP001  
 D: 0000401  
 DATE: 2JUN03  
 C: 0002986  
 DATE: 20JUN04  
 F: 0023758  
 DATE: 07JUN06  
 C: 0037216  
 DATE: 081108  
 H: 0043629  
 DATE: 120508  
 CHECK: G.H.  
 DATE: 26AUG03  
 CHECK: B.L.R.  
 DATE: 20SEP08  
 CHECK: P.O.B.  
 DATE: 200308  
 DATE: 031099

THIS DRAWING COVERS A PROPRIETARY ITEM AND IS THE PROPERTY OF MICRO SWITCH, A DIVISION OF HONEYWELL. THIS DRAWING IS NOT TO BE COPIED OR USED WITHOUT THE APPROVAL OF MICRO SWITCH. FED. MFG. CODE 91929		CATALOG LISTING	
<b>MICRO SWITCH</b> a Honeywell Division		SWITCH, ENCLOSED	
DESIGN UNITS: <input checked="" type="checkbox"/> SI METRIC <input type="checkbox"/> US CUSTOMARY		GL SERIES CHART 1	
TOLERANCES APPLY TO DESIGN UNITS. CONCESSIONS ARE ONLY FOR REFERENCE, UNLESS NOTED. TOLERANCES ARE:		THIRD ANGLE PROJECTION DO NOT SCALE PRINT	
NO PLACES ONE PLACE TWO PLACES THREE PLACES ANGLES	SI .01 .02 .05 .10 .15 .20 .30 .40 .50 .60 .70 .80 .90 1.00 1.50 2.00 3.00 4.00 5.00 6.00 8.00 10.00 15.00 20.00 30.00 40.00 50.00 60.00 80.00 100.00 150.00 200.00 300.00 400.00 500.00 600.00 800.00 1000.00 1500.00 2000.00 3000.00 4000.00 5000.00 6000.00 8000.00 10000.00	US .005 .010 .015 .020 .030 .040 .050 .060 .070 .080 .090 .100 .150 .200 .300 .400 .500 .600 .700 .800 .900 1.000 1.500 2.000 3.000 4.000 5.000 6.000 8.000 10.000 15.000 20.000 30.000 40.000 50.000 60.000 80.000 100.000 150.000 200.000 300.000 400.000 500.000 600.000 800.000 1000.000 1500.000 2000.000 3000.000 4000.000 5000.000 6000.000 8000.000 10000.000	WEIGHT

FIGURES 11, PIN PLUNGER HEAD, LINEAR ACTUATION

CATALOG LISTING	CONTACT BLOCK DIAGRAM	NOMINAL TRAVELS AND RELATED TERMINALS ■ CONTACT CLOSED, □ CONTACT OPEN, ▨ CONTACT CLOSED DIFFERENTIAL TRAVEL, ** POSITIVE OPENING TO IEC 947-5-1	MAXIMUM OPERATING FORCE $\frac{N}{LB}$	MAXIMUM DISCONNECT FORCE $\frac{N}{LB}$	MAX OPERATE VEL $\frac{M}{S}$ $\frac{IN}{S}$	MIN OPERATE VEL $\frac{MM}{S}$ $\frac{IN}{S}$	MAX OPERATE FREQUENCY OPS/MIN
GL**01B GL**07B	SNAP - ACTION CONTACTS SINGLE POLE 	 37.5 35 33** 30.5 21-22 13-14 0.9 DIFFERENTIAL TRAVEL	$\frac{16}{3.6}$	$\frac{27}{6.0}$	$\frac{0.1}{3.9}$	$\frac{1.0}{.04}$	250
GL**03B GL**33B	SLOW ACTING BREAK BEFORE MAKE 	 37.5 35** 30.5 21-22 13-14 34	$\frac{16}{3.6}$	$\frac{27}{6.0}$	$\frac{0.1}{3.9}$	$\frac{1.0}{.04}$	250
GL**04B GL**34B	SLOW ACTING MAKE BEFORE BREAK 	 37.5 34** 30.5 21-22 13-14 35	$\frac{16}{3.6}$	$\frac{27}{6.0}$	$\frac{0.1}{3.9}$	$\frac{1.0}{.04}$	250
GL**05B GL**35B	SLOW ACTING 	 37.5 34 30.5 13-14 23-24	$\frac{16}{3.6}$	$\frac{27}{6.0}$	$\frac{0.1}{3.9}$	$\frac{1.0}{.04}$	250
GL**06B GL**36B	SLOW ACTING 	 37.5 35** 30.5 11-12 21-22 34	$\frac{16}{3.6}$	$\frac{27}{6.0}$	$\frac{0.1}{3.9}$	$\frac{1.0}{.04}$	250
GL**20B GL**22B GL**24B GL**32B	SNAP ACTION CONTACTS DOUBLE POLE 	 37.5 35 33** 30.5 11-12, 21-22 13-14, 23-24 0.9 DIFFERENTIAL TRAVEL	$\frac{16}{3.6}$	$\frac{37}{8.2}$	$\frac{0.1}{3.9}$	$\frac{1.0}{.04}$	250
GL**21B GL**25B GL**28B GL**31B	SNAP ACTION CONTACTS DOUBLE POLE SEQUENTIAL 	 37.5 35 33.8 30.5 11-12 13-14 21-22 23-24 .8 DIFFERENTIAL TRAVEL	$\frac{16}{3.6}$	N/A	$\frac{0.1}{3.9}$	$\frac{1.0}{.04}$	250

FIGURE 12, WOBBLE HEAD, ANGULAR ACTUATION

CATALOG LISTING	CONTACT BLOCK DIAGRAM	NOMINAL TRAVELS AND RELATED TERMINALS ■ CONTACT CLOSED, □ CONTACT OPEN, ▨ CONTACT CLOSED DIFFERENTIAL TRAVEL, ** POSITIVE OPENING TO IEC 947-5-1	MAXIMUM OPERATING TORQUE $\frac{N-m}{LB/in}$	MAXIMUM DISCONNECT TORQUE $\frac{N-m}{LB/in}$	MAX OPERATE DEGREE/S	MIN OPERATE VELOCITY DEGREE/S	MAX OPERATE RATE CYCLES/MIN
GL**01E GL**07E	SNAP - ACTION CONTACTS SINGLE POLE 	 21-22 13-14 18° 8° DIFFERENTIAL TRAVEL	$\frac{0.2}{1.8}$	N/A	360	8	100
GL**03E GL**33E	SLOW ACTING BREAK BEFORE MAKE 	 21-22 13-14 0° 18° 25° 35°	$\frac{0.2}{1.8}$	N/A	360	8	100
GL**04E GL**34E	SLOW ACTING MAKE BEFORE BREAK 	 21-22 13-14 0° 18° 25° 35°	$\frac{0.2}{1.8}$	N/A	360	8	100
GL**05E GL**35E	SLOW ACTING 	 13-14 23-24 0° 25° 35°	$\frac{0.2}{1.8}$	N/A	360	8	100
GL**06E GL**36E	SLOW ACTING 	 11-12 21-22 0° 18° 35°	$\frac{0.2}{1.8}$	N/A	360	8	100
GL**20E GL**22E GL**24E GL**32E	SNAP ACTION CONTACTS DOUBLE POLE 	 11-12, 21-22 13-14, 23-24 18° 8° DIFFERENTIAL TRAVEL	$\frac{0.2}{1.8}$	N/A	360	8	100

FIGURE 12, WOBBLE HEAD, SIDE ACTUATION AT 100mm

CATALOG LISTING	CONTACT BLOCK DIAGRAM	NOMINAL TRAVELS AND RELATED TERMINALS ■ CONTACT CLOSED, □ CONTACT OPEN, ▨ CONTACT CLOSED DIFFERENTIAL TRAVEL, ** POSITIVE OPENING TO IEC 947-5-1	MAXIMUM OPERATING FORCE $\frac{N}{LB}$	MAXIMUM DISCONNECT FORCE $\frac{N}{LB}$	MAX OPERATE VEL $\frac{M}{S}$ $\frac{IN}{S}$	MIN OPERATE VEL $\frac{MM}{S}$ $\frac{IN}{S}$	MAX OPERATE FREQUENCY OPS/MIN
GL**01E GL**07E	SNAP - ACTION CONTACTS SINGLE POLE 	 21-22 13-14 26 12 DIFFERENTIAL TRAVEL	$\frac{2.5}{0.6}$	N/A	$\frac{.5}{19.7}$	$\frac{11}{.43}$	100
GL**03E GL**33E	SLOW ACTING BREAK BEFORE MAKE 	 21-22 13-14 26.5 38.1	$\frac{2.5}{0.6}$	N/A	$\frac{.5}{19.7}$	$\frac{11}{.43}$	100
GL**04E GL**34E	SLOW ACTING MAKE BEFORE BREAK 	 21-22 13-14 26.5 38.1	$\frac{2.5}{0.6}$	N/A	$\frac{.5}{19.7}$	$\frac{11}{.43}$	100
GL**05E GL**35E	SLOW ACTING 	 13-14 23-24 38.1	$\frac{2.5}{0.6}$	N/A	$\frac{.5}{19.7}$	$\frac{11}{.43}$	100
GL**06E GL**36E	SLOW ACTING 	 11-12 21-22 26.5	$\frac{2.5}{0.6}$	N/A	$\frac{.5}{19.7}$	$\frac{11}{.43}$	100
GL**20E GL**22E GL**24E GL**32E	SNAP ACTION CONTACTS DOUBLE POLE 	 11-12, 21-22 13-14, 23-24 26	$\frac{2.5}{0.6}$	N/A	360	8	100

MGL SERIES CHART 1  
 DRAWING NUMBER: 7 OF 13  
 RELEASE NO. PR-201782  
 PTC/CAD  
 W.L.S. 20AUG93  
 CHECK: MDM  
 13  
 ISSUE: 13  
 DATE: 12 SEP 08  
 CHECK: BLP  
 205541  
 9 JUN 00  
 202747  
 34P001  
 0000401  
 04  
 2 JUN 03  
 0002986  
 30 JUN 04  
 0023159  
 07 JUN 08  
 0033216  
 08 FEB 08  
 0042629  
 12 SEP 08

THIS DRAWING COVERS A PROPRIETARY ITEM AND IS THE PROPERTY OF MICRO SWITCH, A DIVISION OF HONEYWELL. THIS DRAWING IS NOT TO BE COPIED OR USED WITHOUT THE APPROVAL OF MICRO SWITCH.

FED. MFG. CODE 91929

**MICRO SWITCH**  
a Honeywell Division

SWITCH, ENCLOSED

CATALOG LISTING  
**GL SERIES CHART 1**

THIRD ANGLE PROJECTION

SCALE: -

DO NOT SCALE PRINT

TOLERANCES  
APPLY TO DESIGN UNITS. CONVERSIONS ARE ONLY FOR REFERENCE. UNLESS NOTED, TOLERANCES ARE:

NO PLACES	ONE PLACE	TWO PLACES	THREE PLACES	SI METRIC	US CUSTOMARY
±.001	±.0005	±.0002	±.0001	±.001	±.0005
±.001	±.0005	±.0002	±.0001	±.001	±.0005
±.001	±.0005	±.0002	±.0001	±.001	±.0005

DESIGN UNITS: SI METRIC  US CUSTOMARY

WEIGHT

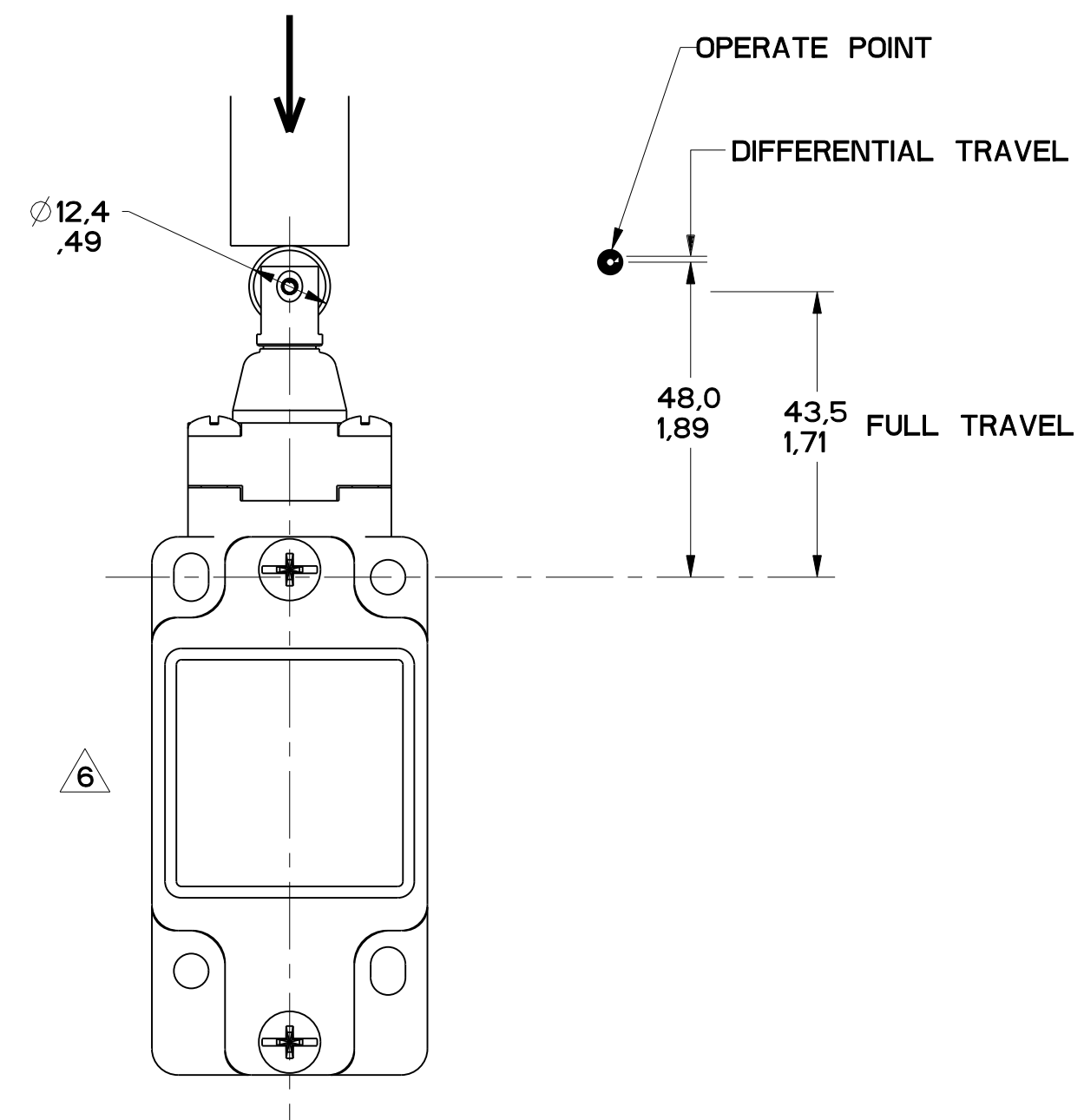


FIGURE 13A

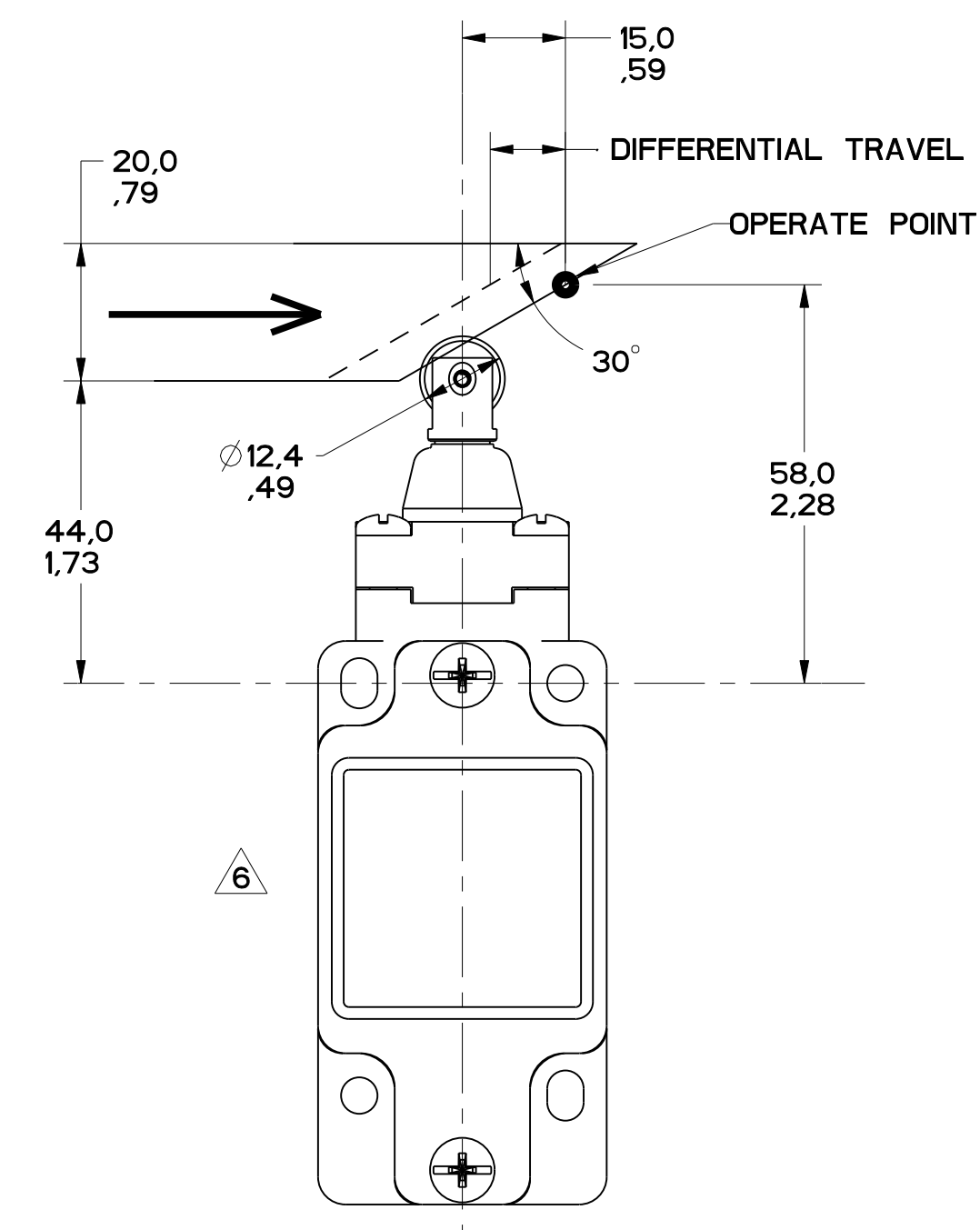


FIGURE 13B

MGL SERIES CHART 1  
 8 OF 13  
 RELEASE NO. PR-20782  
 MDM  
 CHECK MDM  
 25 SEP 68  
 CHECK BJR  
 26 JUN 69  
 0022743  
 347201  
 0006401  
 31003  
 0002986  
 32 JAN 64  
 0023758  
 31 APR 66  
 0037214  
 0811888  
 0442629  
 35  
 12 SEP 68  
 G.H.  
 CHECK G.H.  
 26 JUN 63  
 20 APR 63  
 CHECK  
 G.H.  
 12 SEP 68  
 P.T.C./CAD  
 DRAWN  
 W.L.S.

THIS DRAWING COVERS A PROPRIETARY ITEM AND IS THE PROPERTY OF MICRO SWITCH, A DIVISION OF HONEYWELL. THIS DRAWING IS NOT TO BE COPIED OR USED WITHOUT THE APPROVAL OF MICRO SWITCH.			
FED. MFG. CODE 91929 <b>MICRO SWITCH</b> a Honeywell Division		CATALOG LISTING <b>SWITCH, ENCLOSED</b> <b>MGL SERIES CHART 1</b>	
TOLERANCES APPLY TO DESIGN UNITS. CONVERSIONS ARE ONLY FOR REFERENCE, UNLESS NOTED. TOLERANCES ARE:			
	INCH	MILLIMETER	INCH
NO PLACES	X	±.04	±.0015
ONE PLACE	X, 1X	0.07, 0.14	±.005
TWO PLACES	X, 1X	0.15, 0.28	±.01
THREE PLACES	X, 1X		±.015
ANGLES	X	±.2°	
DESIGN UNITS	SI METRIC		US CUSTOMARY
	[X]		[ ]
WEIGHT			



FIGURE 13A, ROLLER PLUNGER HEAD, PIN ACTUATION

CATALOG LISTING	CONTACT BLOCK DIAGRAM	NOMINAL TRAVELS AND RELATED TERMINALS ■ CONTACT CLOSED, □ CONTACT OPEN, ▨ CONTACT CLOSED DIFFERENTIAL TRAVEL, ** POSITIVE OPENING TO IEC 947-5-1	MAXIMUM OPERATING FORCE $\frac{N}{LB}$	MAXIMUM DISCONNECT FORCE $\frac{N}{LB}$	MAX OPERATE VEL $\frac{M/S}{IN/S}$	MIN OPERATE VEL $\frac{MM/S}{IN/S}$	MAX OPERATE FREQUENCY OPS/MIN
GL**01C GL**07C	SNAP - ACTION CONTACTS SINGLE POLE 	 0.9 DIFFERENTIAL TRAVEL	$\frac{16}{3.6}$	$\frac{27}{6.0}$	$\frac{0.1}{3.9}$	$\frac{1.0}{.04}$	250
GL**03C GL**33C	SLOW ACTING BREAK BEFORE MAKE 	 47	$\frac{16}{3.6}$	$\frac{27}{6.0}$	$\frac{0.1}{3.9}$	$\frac{1.0}{.04}$	250
GL**04C GL**34C	SLOW ACTING MAKE BEFORE BREAK 	 48	$\frac{16}{3.6}$	$\frac{27}{6.0}$	$\frac{0.1}{3.9}$	$\frac{1.0}{.04}$	250
GL**05C GL**35C	SLOW ACTING 	 47	$\frac{16}{3.6}$	$\frac{27}{6.0}$	$\frac{0.1}{3.9}$	$\frac{1.0}{.04}$	250
GL**06C GL**36C	SLOW ACTING 	 48	$\frac{16}{3.6}$	$\frac{27}{6.0}$	$\frac{0.1}{3.9}$	$\frac{1.0}{.04}$	250
GL**20C GL**22C GL**24C GL**32C	SNAP ACTION CONTACTS DOUBLE POLE 	 0.9 DIFFERENTIAL TRAVEL	$\frac{16}{3.6}$	$\frac{37}{8.2}$	$\frac{0.1}{3.9}$	$\frac{1.0}{.04}$	250
GL**21C GL**25C GL**28C GL**31C	SNAP ACTION CONTACTS DOUBLE POLE SEQUENTIAL 	 0.8 DIFFERENTIAL TRAVEL	$\frac{16}{3.6}$	N/A	$\frac{0.1}{3.9}$	$\frac{1.0}{.04}$	250

FIGURE 13B, TOP ROLLER PLUNGER HEAD, CAM ACTUATION PER EN50041

CATALOG LISTING	CONTACT BLOCK DIAGRAM	NOMINAL TRAVELS AND RELATED TERMINALS ■ CONTACT CLOSED, □ CONTACT OPEN, ▨ CONTACT CLOSED DIFFERENTIAL TRAVEL, ** POSITIVE OPENING TO IEC 947-5-1	MAXIMUM OPERATING FORCE $\frac{N}{LB}$	MAXIMUM DISCONNECT FORCE $\frac{N}{LB}$	MAX OPERATE VEL $\frac{M/S}{IN/S}$	MIN OPERATE VEL $\frac{MM/S}{IN/S}$	MAX OPERATE FREQUENCY OPS/MIN
GL**01C GL**07C	SNAP - ACTION CONTACTS SINGLE POLE 	 1.8 DIFFERENTIAL TRAVEL	$\frac{9.3}{2.1}$	$\frac{15.6}{3.5}$	$\frac{0.17}{6.7}$	$\frac{1.7}{.067}$	250
GL**03C GL**33C	SLOW ACTING BREAK BEFORE MAKE 	 16.8	$\frac{9.3}{2.1}$	$\frac{15.6}{3.5}$	$\frac{0.17}{6.7}$	$\frac{1.7}{.067}$	250
GL**04C GL**34C	SLOW ACTING MAKE BEFORE BREAK 	 15	$\frac{9.3}{2.1}$	$\frac{15.6}{3.5}$	$\frac{0.17}{6.7}$	$\frac{1.7}{.067}$	250
GL**05C GL**35C	SLOW ACTING 	 16.8	$\frac{9.3}{2.1}$	$\frac{15.6}{3.5}$	$\frac{0.17}{6.7}$	$\frac{1.7}{.067}$	250
GL**06C GL**36C	SLOW ACTING 	 15	$\frac{9.3}{2.1}$	$\frac{15.6}{3.5}$	$\frac{0.17}{6.7}$	$\frac{1.7}{.067}$	250
GL**20C GL**22C GL**24C GL**32C	SNAP ACTION CONTACTS DOUBLE POLE 	 1.8 DIFFERENTIAL TRAVEL	$\frac{9.3}{2.1}$	$\frac{21.4}{4.8}$	$\frac{0.17}{6.7}$	$\frac{1.7}{.067}$	250
GL**21C GL**25C GL**28C GL**31C	SNAP ACTION CONTACTS DOUBLE POLE SEQUENTIAL 	 1.4 DIFFERENTIAL TRAVEL	$\frac{9.3}{2.1}$	N/A	$\frac{0.17}{6.7}$	$\frac{1.7}{.067}$	250

THIRD ANGLE PROJECTION  
SCALE -  
DO NOT SCALE PRINT  
TOLERANCES  
APPLY TO DESIGN UNITS. CONVERSIONS ARE ONLY FOR REFERENCE. UNLESS NOTED, TOLERANCES ARE:  
DIM TOL DIM TOL DIM TOL  
NO PLACES X .04 X .1 X .01, .05  
ONE PLACE X .1 X 0.40, 0.16 X .16 X .50, 0.15  
THREE PLACES X .1X 0.15, 0.06 X .16X 0.15, 0.15  
ANGLES ±.2° US CUSTOMARY  
DESIGN UNITS X SI METRIC  
WEIGHT

THIS DRAWING COVERS A PROPRIETARY ITEM AND IS THE PROPERTY OF MICRO SWITCH, A DIVISION OF HONEYWELL. THIS DRAWING IS NOT TO BE COPIED OR USED WITHOUT THE APPROVAL OF MICRO SWITCH.  
FED. MFG. CODE 91929  
CATALOG LISTING  
MICRO SWITCH a Honeywell Division  
SWITCH, ENCLOSED  
GL SERIES CHART 1

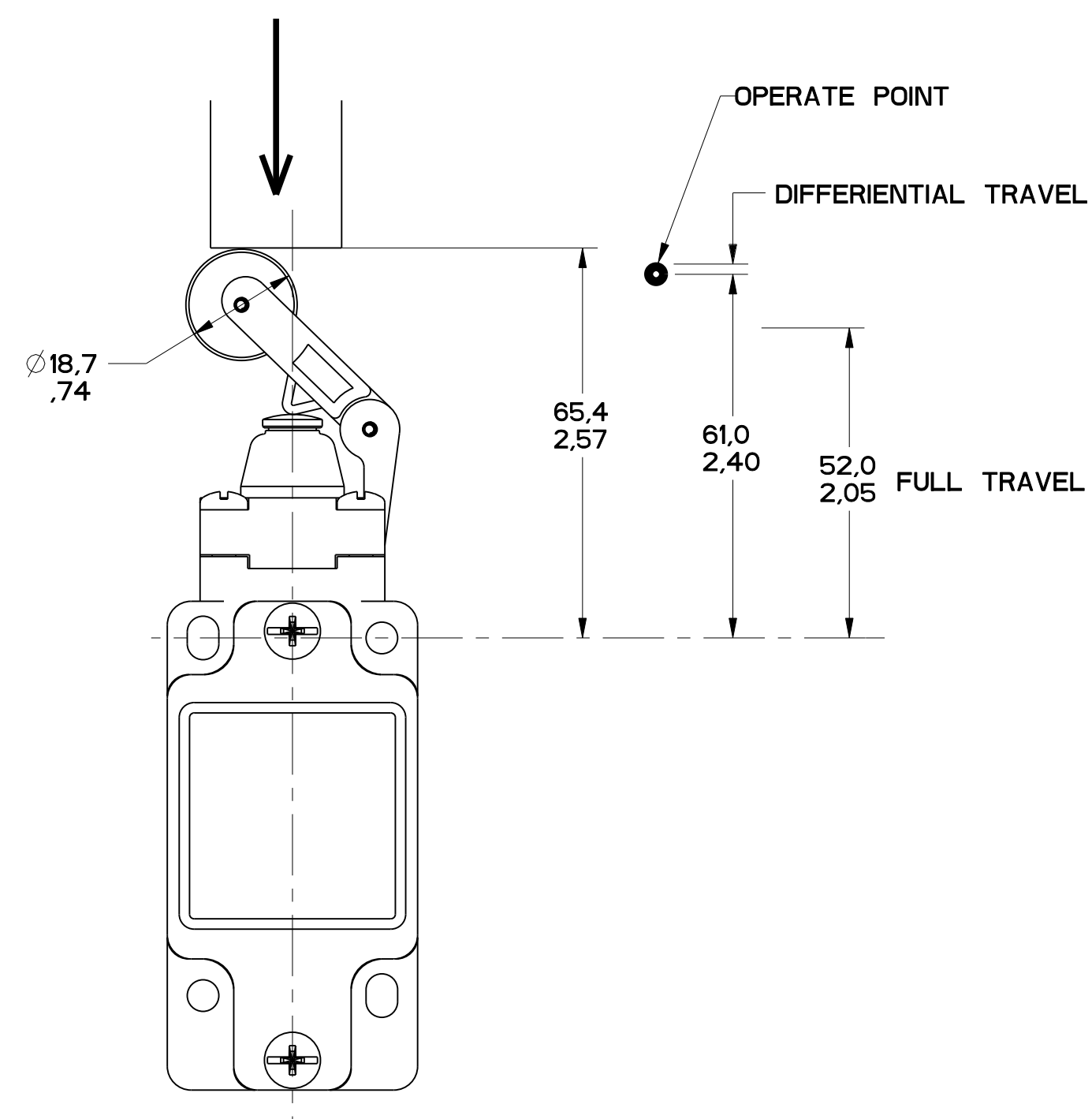


FIGURE 14A

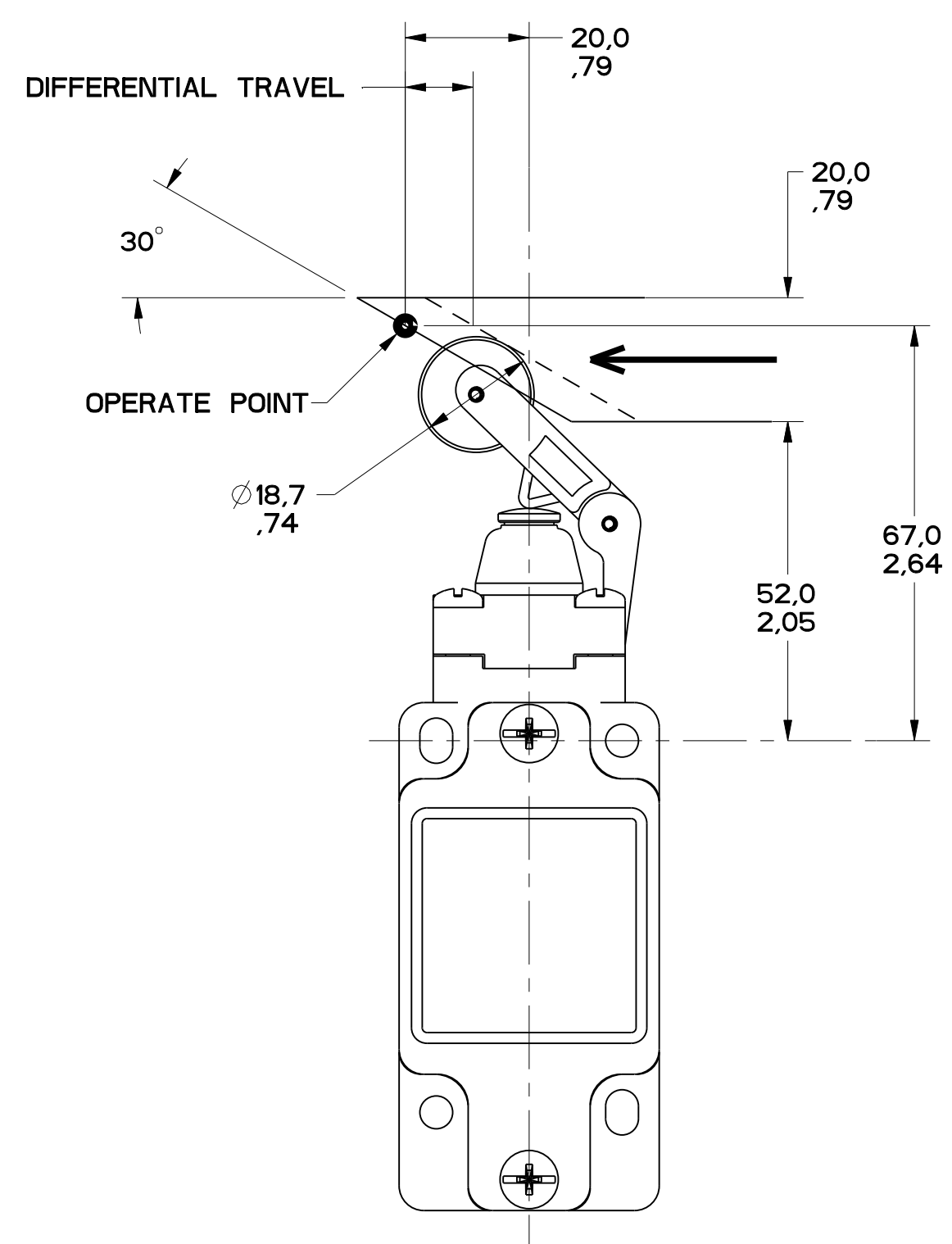


FIGURE 14B

MGL SERIES CHART 1  
 DRAWING NUMBER: 10 OF 13  
 ISSUE: 13  
 CHECK: MDW  
 PTC/CAD: 3D  
 DRAWN: G.H. 02MARC01  
 CHECK: SAV  
 DATE: 02MARC01  
 APPROVED: 02APR01  
 DATE: 02JUN03  
 REV: 0005461  
 C: 0007986  
 D: 0023759  
 F: 0043629  
 G: 0037216  
 H: 0019100  
 I: 0043629  
 J: 0019100

THIS DRAWING COVERS A PROPRIETARY ITEM AND IS THE PROPERTY OF MICRO SWITCH, A DIVISION OF HONEYWELL. THIS DRAWING IS NOT TO BE COPIED OR USED WITHOUT THE APPROVAL OF MICRO SWITCH.		FEDERAL MFG. CODE 91929	
<b>MICRO SWITCH</b> a Honeywell Division		SWITCH, ENCLOSED	
CATALOG LISTING		<b>GL SERIES CHART 1</b>	
DESIGN UNITS: <input checked="" type="checkbox"/> SI METRIC <input type="checkbox"/> US CUSTOMARY		TOLERANCES: APPLY TO DESIGN UNITS. CONCESSIONS ARE ONLY FOR REFERENCE, UNLESS NOTED. TOLERANCES ARE:	
NO PLACES	X	±.04	±.04
ONE PLACE	X, XX	0.40/0.16	0.50/0.15
TWO PLACES	X, XX	0.15/0.06	0.15/0.05
THREE PLACES	X, XX	±.02	±.02
ANGLES		±.2°	
WEIGHT		WEIGHT	

FIGURE 14A, TOP ROLLER LEVER HEAD WITH PIN ACTUATION

CATALOG LISTING	CONTACT BLOCK DIAGRAM	NOMINAL TRAVELS AND RELATED TERMINALS ■ - CONTACT CLOSED, □ - CONTACT OPEN, ▨ - CONTACT CLOSED DIFFERENTIAL TRAVEL, ** POSITIVE OPENING TO IEC 947-5-1	MAXIMUM OPERATING FORCE $\frac{N}{LB}$	MAXIMUM DISCONNECT FORCE $\frac{N}{LB}$	MAX OPERATE VEL $\frac{M/S}{IN/S}$	MIN OPERATE VEL $\frac{M/S}{IN/S}$	MAX OPERATE FREQUENCY OPS/MIN
GL**01D GL**07D	SNAP - ACTION CONTACTS SINGLE POLE 	 65.2 61 56.9** 52 21-22 13-14 1.7 DIFFERENTIAL TRAVEL	$\frac{9.5}{2.1}$	$\frac{12}{2.7}$	$\frac{0.17}{6.7}$	$\frac{1.7}{.067}$	250
GL**03D GL**33D	SLOW ACTING BREAK BEFORE MAKE 	 65.2 61** 52 21-22 13-14 59.1	$\frac{9.5}{2.1}$	$\frac{12}{2.7}$	$\frac{0.17}{6.7}$	$\frac{1.7}{.067}$	250
GL**04D GL**34D	SLOW ACTING MAKE BEFORE BREAK 	 65.2 59.1** 52 21-22 13-14 61	$\frac{9.5}{2.1}$	$\frac{12}{2.7}$	$\frac{0.17}{6.7}$	$\frac{1.7}{.067}$	250
GL**05D GL**35D	SLOW ACTING 	 65.2 59.1 52 13-14 23-24	$\frac{9.5}{2.1}$	$\frac{12}{2.7}$	$\frac{0.17}{6.7}$	$\frac{1.7}{.067}$	250
GL**06D GL**36D	SLOW ACTING 	 65.2 61** 52 11-12 21-22	$\frac{9.5}{2.1}$	$\frac{12}{2.7}$	$\frac{0.17}{6.7}$	$\frac{1.7}{.067}$	250
GL**20D GL**22D GL**24D GL**32D	SNAP ACTION CONTACTS DOUBLE POLE 	 65.2 61 56.9** 52 11-12, 21-22 13-14, 23-24 1.7 DIFFERENTIAL TRAVEL	$\frac{9.5}{2.1}$	$\frac{16.4}{3.7}$	$\frac{0.17}{6.7}$	$\frac{1.7}{.067}$	250
GL**21D GL**25D GL**28D GL**31D	SNAP ACTION CONTACTS DOUBLE POLE SEQUENTIAL 	 65.2 61 58.6 11-12 13-14 21-22 23-24 1.6 DIFFERENTIAL TRAVEL 1.6 DIFFERENTIAL TRAVEL	$\frac{9.5}{2.1}$	N/A	$\frac{0.17}{6.7}$	$\frac{1.7}{.067}$	250

FIGURE 14B, TOP ROLLER LEVER HEAD WITH CAM ACTUATION

CATALOG LISTING	CONTACT BLOCK DIAGRAM	NOMINAL TRAVELS AND RELATED TERMINALS ■ - CONTACT CLOSED, □ - CONTACT OPEN, ▨ - CONTACT CLOSED DIFFERENTIAL TRAVEL, ** POSITIVE OPENING TO IEC 947-5-1	MAXIMUM OPERATING FORCE $\frac{N}{LB}$	MAXIMUM DISCONNECT FORCE $\frac{N}{LB}$	MAX OPERATE VEL $\frac{M/S}{IN/S}$	MIN OPERATE VEL $\frac{M/S}{IN/S}$	MAX OPERATE FREQUENCY OPS/MIN
GL**01D GL**07D	SNAP - ACTION CONTACTS SINGLE POLE 	 0 20 29.1** 21-22 13-14 4.1 DIFFERENTIAL TRAVEL	$\frac{5.5}{1.2}$	$\frac{7.0}{1.6}$	$\frac{0.29}{11.4}$	$\frac{2.9}{.11}$	250
GL**03D GL**33D	SLOW ACTING BREAK BEFORE MAKE 	 0 20** 21-22 13-14 24.1	$\frac{5.5}{1.2}$	$\frac{7.0}{1.6}$	$\frac{0.29}{11.4}$	$\frac{2.9}{.11}$	250
GL**04D GL**34D	SLOW ACTING MAKE BEFORE BREAK 	 0 24.1** 21-22 13-14 20	$\frac{5.5}{1.2}$	$\frac{9.6}{2.2}$	$\frac{0.29}{11.4}$	$\frac{2.9}{.11}$	250
GL**05D GL**35D	SLOW ACTING 	 0 24.1 13-14 23-24	$\frac{5.5}{1.2}$	$\frac{7.0}{1.6}$	$\frac{0.29}{11.4}$	$\frac{2.9}{.11}$	250
GL**06D GL**36D	SLOW ACTING 	 0 20** 11-12 21-22	$\frac{5.5}{1.2}$	$\frac{7.0}{1.6}$	$\frac{0.29}{11.4}$	$\frac{2.9}{.11}$	250
GL**20D GL**22D GL**24D GL**32D	SNAP ACTION CONTACTS DOUBLE POLE 	 0 20 29.1** 11-12, 21-22 13-14, 23-24 4.1 DIFFERENTIAL TRAVEL	$\frac{5.5}{1.2}$	$\frac{7.0}{1.6}$	$\frac{0.29}{11.4}$	$\frac{2.9}{.11}$	250
GL**21D GL**25D GL**28D GL**31D	SNAP ACTION CONTACTS DOUBLE POLE SEQUENTIAL 	 0 20 25.5 11-12 13-14 21-22 23-24 3.7 DIFFERENTIAL TRAVEL 3.7 DIFFERENTIAL TRAVEL	$\frac{5.5}{1.2}$	N/A	$\frac{0.29}{11.4}$	$\frac{2.9}{.11}$	250

MGL SERIES CHART 1  
 DRAWING NUMBER: 13  
 PAGE 11 OF 13  
 RELEASE NO. -  
 PTC/CAD 3D  
 DRAWN: GH, 05MARC01  
 CHECK: SAV, 05MARC01  
 CHECK: BLR, 05SEP08  
 CHECK: MDM, 05SEP08  
 ISSUE: 13  
 DATE: 05SEP08  
 BY: 0005061  
 FOR: 2JUN03  
 C: 0027986  
 D: 0023759  
 E: 0037216  
 F: 0043679  
 G: 0012608  
 H: 0012608

THIS DRAWING COVERS A PROPRIETARY ITEM AND IS THE PROPERTY OF MICRO SWITCH, A DIVISION OF HONEYWELL. THIS DRAWING IS NOT TO BE COPIED OR USED WITHOUT THE APPROVAL OF MICRO SWITCH.

FED. MFG. CODE 91929

**MICRO SWITCH**  
a Honeywell Division

SWITCH, ENCLOSED

CATALOG LISTING  
**GL SERIES CHART 1**

THIRD ANGLE PROJECTION

SCALE: -

DO NOT SCALE PRINT

TOLERANCES  
APPLY TO DESIGN UNITS. CONVERSIONS ARE ONLY FOR REFERENCE. UNLESS NOTED, TOLERANCES ARE:

	DIM	TOL.	DIM	TOL.
NO PLACES	X	±.04	X	±.0015
ONE PLACE	X	±.01	X	±.0015
TWO PLACES	X	±.0015	X	±.0015
THREE PLACES	X	±.0005	X	±.0015
ANGLES		±2'		

DESIGN UNITS:  SI METRIC  US CUSTOMARY

WEIGHT

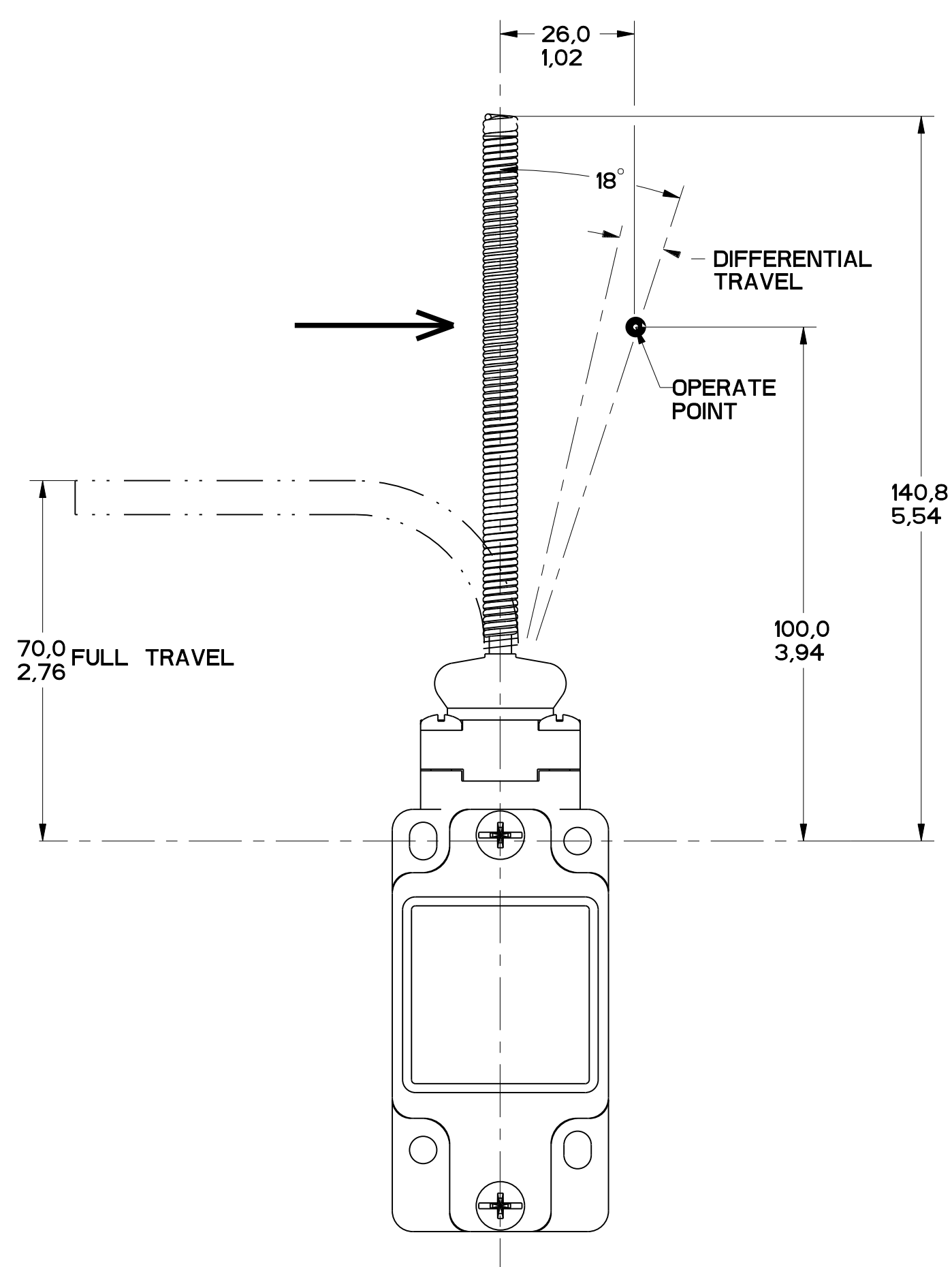


FIGURE 15

PTC/CAD 3D  
 DRAWN  
 GH  
 05MARCH01  
 CHECK  
 SAV  
 05MARCH01  
 CHECK  
 BLR  
 02SEP08  
 CHECK  
 MDW  
 02SEP08  
 CHECK  
 13  
 DRAWING NUMBER  
 12 OF 13  
 RELEASE NO. -  
 REVISIONS  
 A 202747  
 B 3APR01  
 C 0005401  
 D 0027986  
 E 0023759  
 F 074066  
 G 0037216  
 H 001988  
 I 0043679  
 J 021268

THIS DRAWING COVERS A PROPRIETARY ITEM AND IS THE PROPERTY OF MICRO SWITCH, A DIVISION OF HONEYWELL. THIS DRAWING IS NOT TO BE COPIED OR USED WITHOUT THE APPROVAL OF MICRO SWITCH.		FEDERAL MFG. CODE 91929		CATALOG LISTING	
<b>MICRO SWITCH</b> a Honeywell Division		SWITCH, ENCLOSED		GL SERIES CHART 1	
DESIGN UNITS <input checked="" type="checkbox"/> SI METRIC <input type="checkbox"/> US CUSTOMARY		TOLERANCES APPLY TO DESIGN UNITS. CONCESSIONS ARE ONLY FOR REFERENCE, UNLESS NOTED. TOLERANCES ARE:		DO NOT SCALE PRINT	
NO PLACES	X	1/100	±	0,01	±
ONE PLACE	X,1	0,01	±	0,01	±
TWO PLACES	X,11	0,01	±	0,01	±
THREE PLACES	X,111	0,001	±	0,001	±
ANGLES			±2'		
WEIGHT					

FIGURE 15, CAT WISKER HEAD, ANGULAR ACTUATION

CATALOG LISTING	CONTACT BLOCK DIAGRAM	NOMINAL TRAVELS AND RELATED TERMINALS ■ - CONTACT CLOSED, □ - CONTACT OPEN, ▨ - CONTACT CLOSED DIFFERENTIAL TRAVEL	MAXIMUM OPERATING TORQUE N-m LB-IN	MAXIMUM DISCONNECT TORQUE N-m LB-IN	MAX OPERATE DEGREE/S	MIN OPERATE VELOCITY DEGREE/S	MAX OPERATE RATE CYCLES/MIN
GL**01K GL**07K	SNAP - ACTION CONTACTS SINGLE POLE 	21-22 18° 13-14 8° DIFFERENTIAL TRAVEL	0.1 .9	N/A	360	8	100
GL**03K GL**33K	SLOW ACTING BREAK BEFORE MAKE 	21-22 18° 13-14 25	0.1 .9	N/A	360	8	100
GL**04K GL**34K	SLOW ACTING MAKE BEFORE BREAK 	21-22 25° 13-14 18°	0.1 .9	N/A	360	8	100
GL**05K GL**35K	SLOW ACTING 	13-14 25° 23-24	0.1 .9	N/A	360	8	100
GL**06K GL**36K	SLOW ACTING 	11-12 18° 21-22	0.1 .9	N/A	360	8	100
GL**20K GL**22K GL**24K GL**32K	SNAP ACTION CONTACTS DOUBLE POLE 	11-12, 21-22 18° 13-14, 23-24 8° DIFFERENTIAL TRAVEL	0.1 .9	N/A	360	8	100

FIGURE 15, CAT WISKER HEAD, SIDE ACTUATION AT 100mm

CATALOG LISTING	CONTACT BLOCK DIAGRAM	NOMINAL TRAVELS AND RELATED TERMINALS ■ - CONTACT CLOSED, □ - CONTACT OPEN, ▨ - CONTACT CLOSED DIFFERENTIAL TRAVEL	MAXIMUM OPERATING FORCE N LB	MAXIMUM DISCONNECT FORCE N LB	MAX OPERATE VEL M/S IN/S	MIN OPERATE VEL mm/S IN/S	MAX OPERATE FREQUENCY OPS/MIN
GL**01K GL**07K	SNAP - ACTION CONTACTS SINGLE POLE 	21-22 26 13-14 12 DIFFERENTIAL TRAVEL	1.3 .3	N/A	.5 19.7	.11 .43	100
GL**03K GL**33K	SLOW ACTING BREAK BEFORE MAKE 	21-22 26.5 38.1 13-14	1.3 0.3	N/A	.5 19.7	.11 .43	100
GL**04K GL**34K	SLOW ACTING MAKE BEFORE BREAK 	21-22 26.5 38.1 13-14	1.3 0.3	N/A	.5 19.7	.11 .43	100
GL**05K GL**35K	SLOW ACTING 	21-22 38.1 13-14	1.3 0.3	N/A	.5 19.7	.11 .43	100
GL**06K GL**36K	SLOW ACTING 	11-12 26.5 21-22	1.3 0.3	N/A	.5 19.7	.11 .43	100
GL**20K GL**22K GL**24K GL**32K	SNAP ACTION CONTACTS DOUBLE POLE 	11-12, 21-22 26 13-14, 23-24 12 DIFFERENTIAL TRAVEL	1.3 0.3	N/A	.5 19.7	.11 .43	100

MGL SERIES CHART 1  
 DRAWING NUMBER: 13 OF 13  
 RELEASE NO.:  
 ISSUE: 13  
 PTC/CAD: 3D  
 DRAWN: G.H. OSMARCO  
 CHECK: SAV  
 DATE: 05/21/08  
 APPROVED: 04/30/09  
 DATE: 05/21/08  
 APPROVED: 05/21/08

THIRD ANGLE PROJECTION

SCALE: -

DO NOT SCALE PRINT

TOLERANCES

APPLY TO DESIGN UNITS. CONVERSIONS ARE ONLY FOR REFERENCE. UNLESS NOTED, TOLERANCES ARE:

	DIM	TOL.	DIM	TOL.
NO PLACES	X	±.04	X	±.0015
ONE PLACE	X	±.0015	X	±.0005
TWO PLACES	X	±.0005	X	±.0002
THREE PLACES	X	±.0002	X	±.0001
ANGLES		±2'		

DESIGN UNITS:  SI METRIC  US CUSTOMARY

WEIGHT

THIS DRAWING COVERS A PROPRIETARY ITEM AND IS THE PROPERTY OF MICRO SWITCH, A DIVISION OF HONEYWELL. THIS DRAWING IS NOT TO BE COPIED OR USED WITHOUT THE APPROVAL OF MICRO SWITCH.

FED. MFG. CODE 91929

CATALOG LISTING

**MICRO SWITCH**  
a Honeywell Division

**SWITCH, ENCLOSED**

**GL SERIES CHART 1**